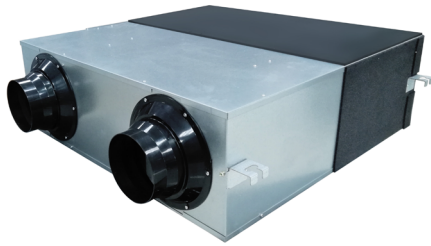


VMC2 250 | 350H

INDEX



Plug&Play



Low silhouette



Sound insulation

DESCRIPTION

Domestic heat recovery unit, model VMC2 250H/350H, low noise and low profile for installation in false ceilings. Easy access for maintenance. Plug&Play control for quick installation with LCD digital display and RS485 (Mod Bus), selection of various operating modes, and indication of when filters need cleaning. Horizontal or vertical installation.

Self-supporting structure in galvanized steel sheet and high-density ESP with thermal and acoustic insulation.

ADVANTAGES

- Compact, low-profile unit
- Quiet operation
- Wi-Fi (optional)

ACCESSORIES

- F9 filter
- Humidity sensor
- CO2 sensor
- WI-FI module

COMPONENTS

FAN

Double inlet centrifugal fan equipped with a high-efficiency motor with 3 speeds.

HEAT RECOVERY UNIT

High-efficiency heat exchanger with up to 82% recovery in polymeric material, equipped with 100% flow bypass for free cooling.

FILTERS

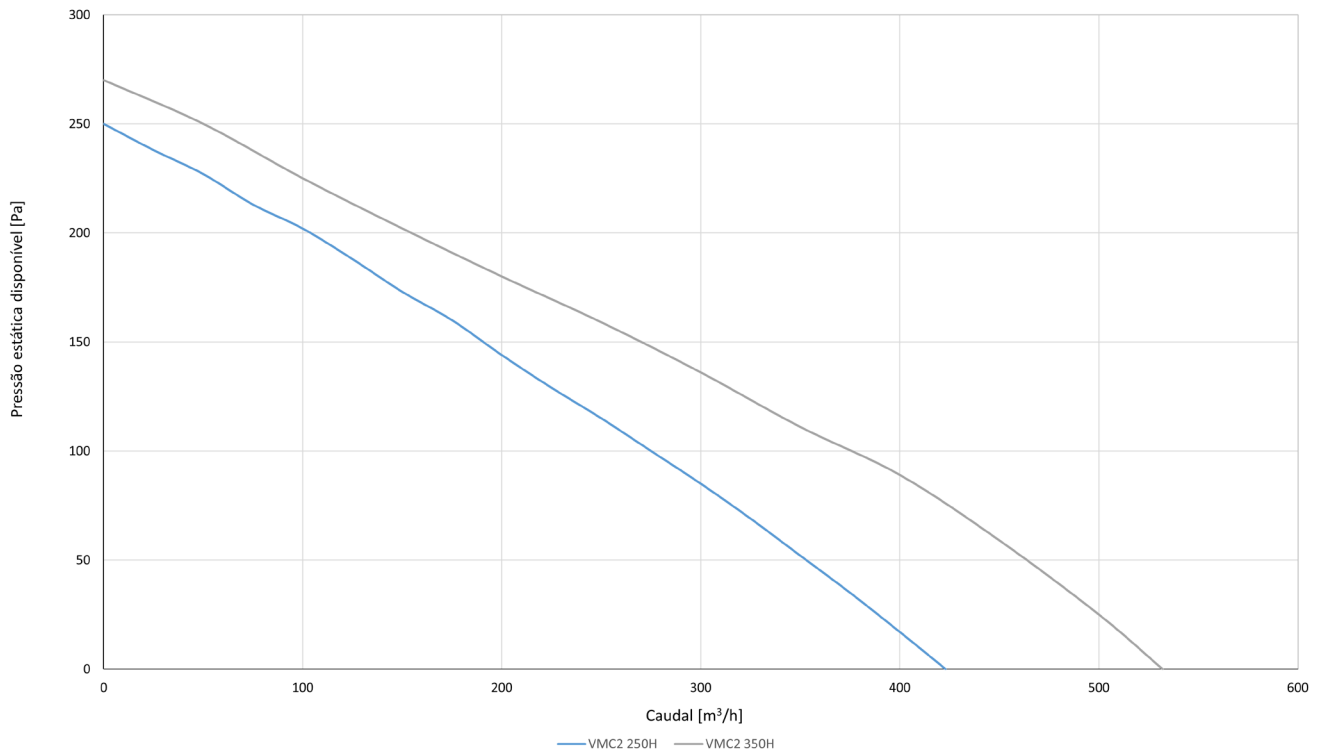
The units are equipped as standard with synthetic fiber filters of class G4 ISO coarse > 65% (EN 779/ISO16890). As an option, it is possible to install an F9 ISO ePM1 > 80% (EN779/ISO16890) filter in the supply air.

CHARACTERISTICS

VMC2	250H			350H		
	min.	avg.	max.	min.	avg.	max.
Speed						
Flow rate (m ³ /h)	200	250	250	300	350	350
Static pressure (Pa)	90	105	110	110	118	120
Engine Power (W)	117			150		
Power supply (V F Hz)	220 1 50			220 1 50		
IMÁX (A)	0.56			0.72		
Sound Power Level dB (A)	27	34	34.5	31	37	37.5
Recovery Efficiency (%)	82			82		

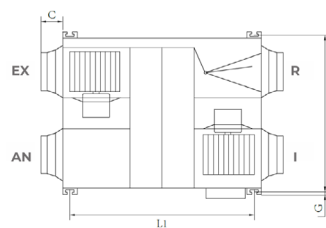
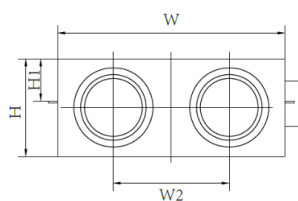
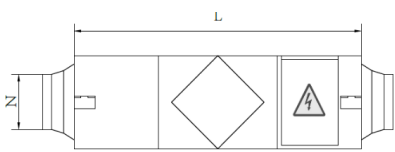
* Sound power level at 3m

CHARACTERISTIC CURVES



DIMENSIONS

VMC2	250H	350H
L (mm)	744	744
L1 (mm)	675	675
W (mm)	599	804
W1 (mm)	657	860
W2 (mm)	315	480
H (mm)	270	270
H1 (mm)	111	111
C (mm)	100	100
G (mm)	19	19
N (mm)	Φ144	Φ144
Weight (kg)	25	31



EX = exhaust
 R = return
 AN = fresh air
 I = insufflation

NOTE: DISTANCE FOR MAINTENANCE AND ACCESS TO EQUIPMENT | 600MM