

# PLUG EC

## INDEX



Double panel structure



Cut-off switch included



EC Technology

### DESCRIPTION

Ventilation box, PLUG EC model with high acoustic attenuation, allowing installation in any position. Flow rate up to 17,000m<sup>3</sup>/h. Equipped with cut-off switch and flow regulator.

Modular structure in extruded aluminum profile in accordance with DIN 17615 with 30mm and reinforced nylon corners. Double-wall panels 25mm thick, with the outer face in magnelis with corrosion class C5, inner face in galvanized steel sheet in accordance with EN 10192. The intermediate insulation of the panels is filled with 25mm thick self-extinguishing polystyrene plates with a density of 30kg/m<sup>3</sup>, offering high resistance to different mechanical stresses. The base of the unit is fitted with threaded rivets for mounting anti-vibration feet (supplied). Supplied with a closed rear panel in the S version and without a panel in the version with filter.

Available in 9 sizes, standard version or version with F filter.

### STANDARDS AND CERTIFICATIONS



Class IES



Mechanical protection IP55

### ADVANTAGES

- Low consumption electronic motor
- Corrosion class C5
- 25mm thick panels

### ACCESSORIES

- Duckbill nozzle
- Weatherproof ceiling
- Constant flow rate
- CO2 control
- On-off switch
- 0-10V flow regulator
- Air differential pressure switch

### COMPONENTS

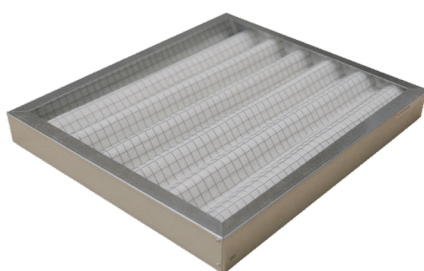
#### ENGINE

High-efficiency electronically commutated external rotor engines, class F insulation, with minimum efficiency class IE4 and IE5, with mechanical protection IP 54 and IP 55. With Mod-Bus connection (250 to 560).



#### FAN

Centrifugal fans with directly coupled motor and high-efficiency single inlet turbine with backward blades, statically and dynamically balanced in accordance with ISO 1940 and AMCA 204-G2.5 standards. The PLUG FAN type centrifugal fan is directly driven by an EC motor, high-efficiency external rotor with electronic commutation, class F insulation, with IE4 and IE5 efficiency, and IP 54 and IP 55 mechanical protection.



#### FILTERS

M5/ePM10 50% class filter in accordance with EN 779 and ISO 16890. They are mounted in ducts designed to maintain bypass leakage values within class F9, in accordance with EN 1886.



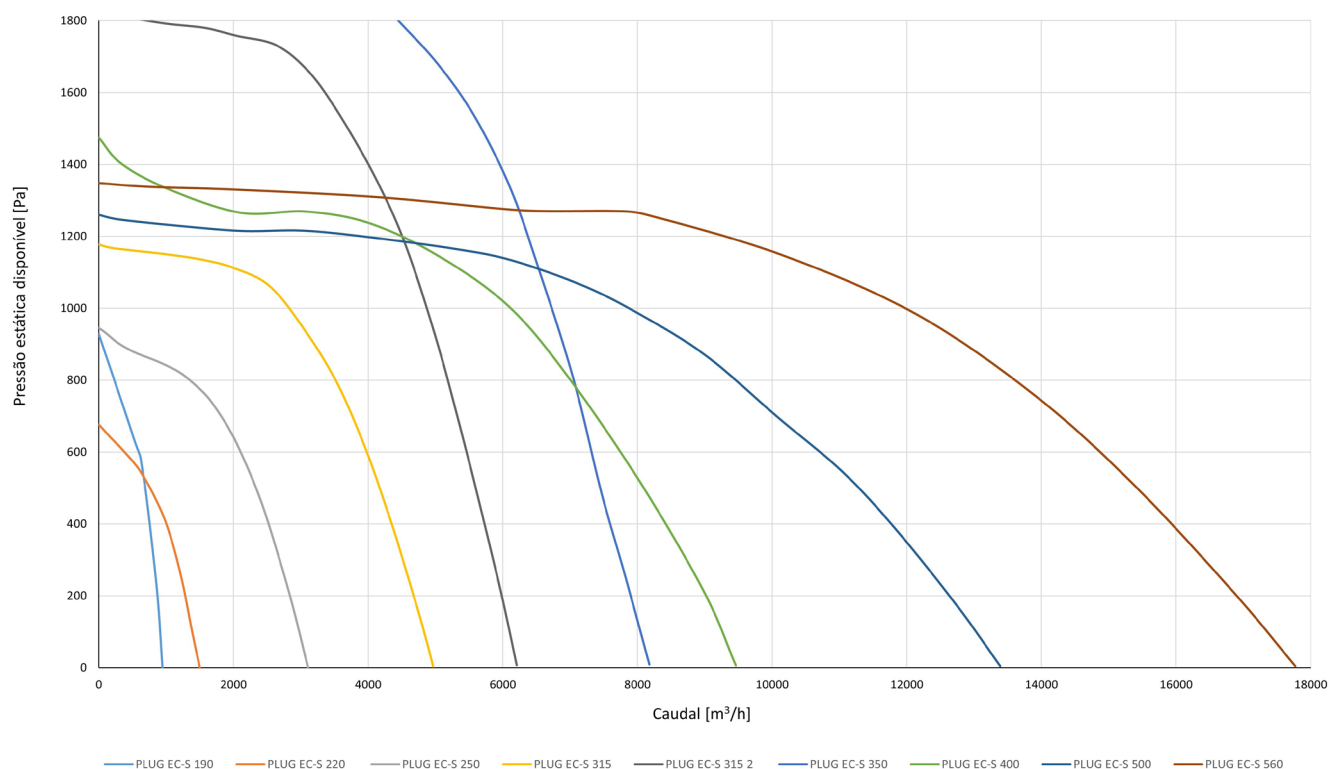
## CHARACTERISTICS

PLUG EC - S	190	220	250	315	315-2	350	400	500	560
Flow rate (m <sup>3</sup> /h)	910	1393	2979	4828	6098	8039	9249	13 030	17 355
Static pressure (Pa)	100								
Rotational speed (rpm)	4500	3000	2950	2920	3640	3400	2500	1860	1750
Motor power (W)	0,18	0,2	0,7	1,35	2,5	3,7	2,5	3,5	5
Power supply (V   F   Hz)	230   1   50				400   3   50				
Motor IP class	IP 44	IP 44	IP 44	IP 55	IP 55	IP 55	IP 55	IP 55	IP 55
IMAX (A)	1,4	1,3	3,3	5,8	3,8	5,5	3,8	5,3	7,6
Sound power (dB (A))*	42	37	45	49	55	56	54	53	57
PLUG EC - F	190	220	250	315	315-2	350	400	500	560
Flow rate (m <sup>3</sup> /h)	895	1347	2879	4647	5888	7780	8795	12 550	16 496
Static pressure (Pa)	100								
Rotational speed (rpm)	4500	3000	2950	2920	3640	3400	2500	1860	1750
Motor power (W)	0,18	0,2	0,7	1,35	2,5	3,7	2,5	3,5	5
Power supply (V   F   Hz)	230   1   50				400   3   50				
Motor IP class	IP 44	IP 44	IP 44	IP 55	IP 55	IP 55	IP 55	IP 55	IP 55
IMAX (A)	1,4	1,6	3,3	5,8	3,8	5,5	3,8	5,3	7,6
Sound power (dB (A)) *	42	37	45	49	55	56	54	53	57

\* Sound power level at 4m, measured in free field according to ISO 3744

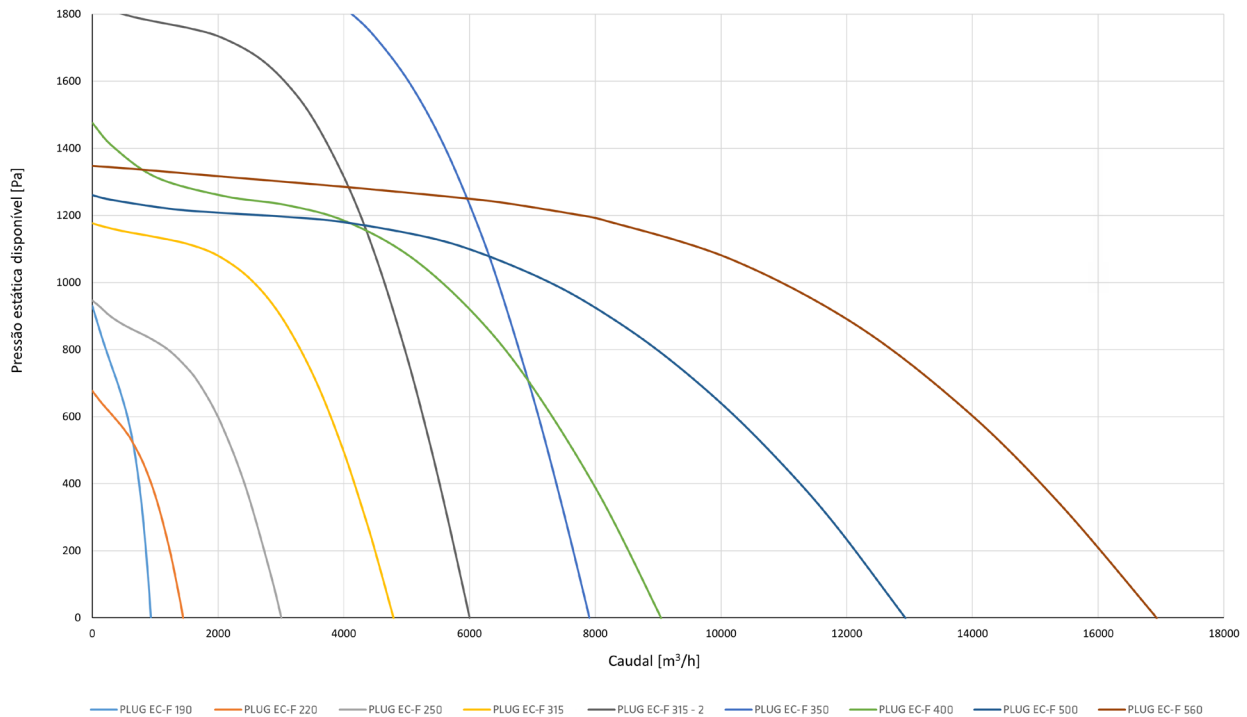
## CHARACTERISTIC CURVES

## PLUG EC-S



## CHARACTERISTICS

## PLUG EC-F



## DIMENSIONS

PLUG EC - S	190	220	250	315	315-2	350	400	500	560
A (mm)	360	400	480	515	515	565	615	795	795
L (mm)	360	400	480	515	515	565	615	795	795
P (mm)	360	400	480	600	600	650	700	1000	1000
Weight (kg)	11	14	28	33	35	40	84	112	131
PLUG EC-F	190	220	250	315	315-2	350	400	500	560
A (mm)	360	400	480	515	515	565	615	795	795
L (mm)	360	400	480	515	515	565	615	795	795
P (mm)	360	400	480	600	600	650	700	1000	1000
Weight (kg)	12	15	29	34	36	42	86	114	133

