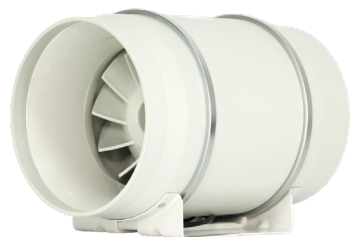




EVO LINE A 2 EC

INDEX



EC Technology



In Line fan

DESCRIPTION

InLine fan, model EVO LINE A 2 EC for installation in circular ducts.

High-quality structure in low-flammability polypropylene. Removable central body with simple snap-fit for easy assembly and maintenance. Aerodynamics specially designed for high performance and reduced noise levels. Can be mounted in any position, in parallel or in series.

Available in 6 sizes.

ADVANTAGES

- Low consumption electronic motor
- Easy assembly and maintenance
- Corrosion resistance

ACCESSORIES

- Cut-off switch
- 0-10V flow regulator
- On-Off switch

COMPONENTS

ENGINE

Single-phase 220V - 50 Hz motor, state-of-the-art EC direct current motor with high efficiency, up to 90%. Optimised performance at any operating point. Controlled via a 0-10V signal.

VENTILATOR

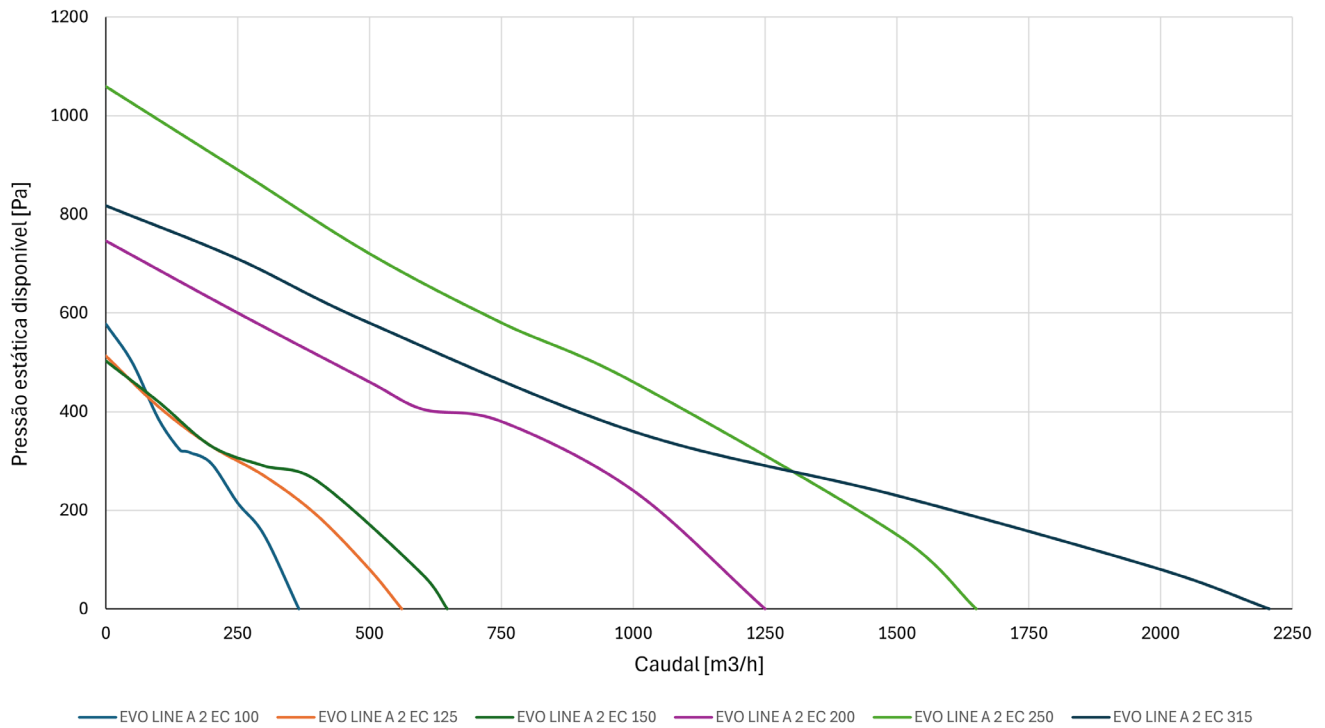
Semi-spherical centrifugal turbine design and innovative blade profile ensure exceptional flow rates and pressure levels with reduced noise levels.

CHARACTERISTICS

EVO LINE A 2 EC	100	125	150	200	250	315
Flow rate (m³/h)	366	561	647	1250	1650	2206
Motor power (W)	70	70	70	180	255	250
Maximum rotation (rpm)	3800	3800	3000	3000	3000	2350
Power supply (V F Hz)	240 1 50					
IMAX (A)	0,47	0,47	0,47	1,05	1,5	1,4
IP Motor Protection Class	IP44					
Motor type (AC/EC)	EC					
ERP length	Sim					
Sound power (dB(A))*	48	52	60	64	70	66

* Sound power level at 3 m

CHARACTERISTIC CURVES



DIMENSIONS

EVO LINE A 2 EC	100	125	150	200	250	315
A (mm)	80	80	80	100	150	181
B (mm)	60	60	60	94	150	178
C (mm)	4,5	4,5	5	5,5	8*11	8*11
D (mm)	97	123	147	197	247	312
E (mm)	99	99	109	125	150	187
F (mm)	116	116	127	137	174	216
G (mm)	163	163	187	205	261	325
L (mm)	302	257	313	302	383	446
W (mm)	204	204	227	249	310	386
H (mm)	195	195	208	237	286	357
Weight (kg)	1,5	1,5	2,6	4,9	7,5	11

