

High available head duct fancoil units

FHP 1 - 4 kW



FHP is new high available head duct fancoil units.

The series offers an air flow range from 280 to 650 m³/h, with a total of 6 models featuring high-efficiency heat exchange coils.

The fan coil unit is enhanced compared to traditional fan coils to ensure a useful static pressure of 50 and 60 Pa at medium and maximum speeds, respectively. It is classified as a ductable unit by Eurovent.

It is a versatile fan coil that allows horizontal and vertical installation. In fact, FHP is equipped with a double condensate collection tray. With a height of only 22.4 cm, it is perfect for any type of false ceiling.

FHP can be installed in offices, hospitality facilities, and light commercial spaces, as well as in residential buildings, where there are often stringent requirements related to noise levels and installation spaces.

It comes with a plethora of factory-installable options and accessories, such as control panels, plenums, and fittings, to provide everything needed for the HVAC installer.



2 pipes systems



4 pipes systems



Vertical installation



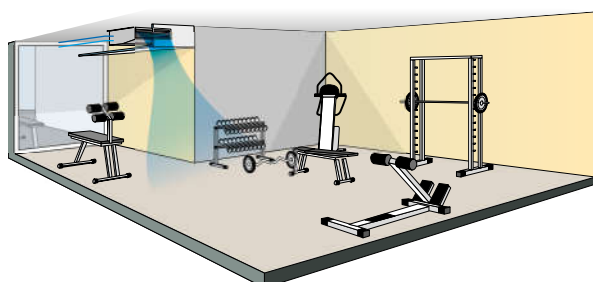
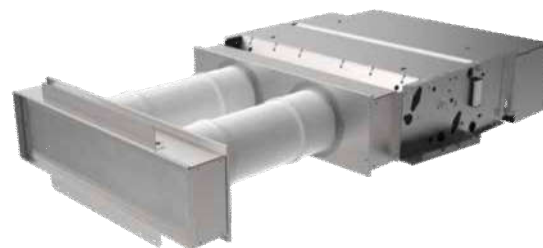
Centrifugal fan



Horizontal installation

PLUS

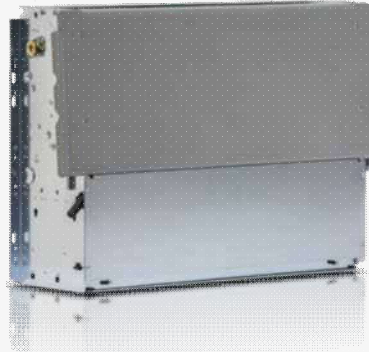
- » PSU of 50 Pa at medium speed
- » Compact dimensions
- » Reversible water connections
- » Compatible with zoning systems



MAIN COMPONENTS

Structure

Built from galvanised steel sheet of extra thickness, heat and sound insulated by means of Class 1 self-extinguishing panels, complete with double drip tray for collecting condensate.



Heat exchanger

High efficiency heat exchanger made with copper piping and aluminium fins, provided with brass manifolds and vent valve. The water connections are reversible at the time of installation. On request it is possible to mount an additional heat exchanger for 4-pipe systems.

Electric motor

It is mounted on vibration dampers, with permanently activated capacitor and thermal protection of the windings, and is directly coupled with the fans. It is available as 3-speed version in order to meet all the specific needs of performance, quietness, and power consumption.

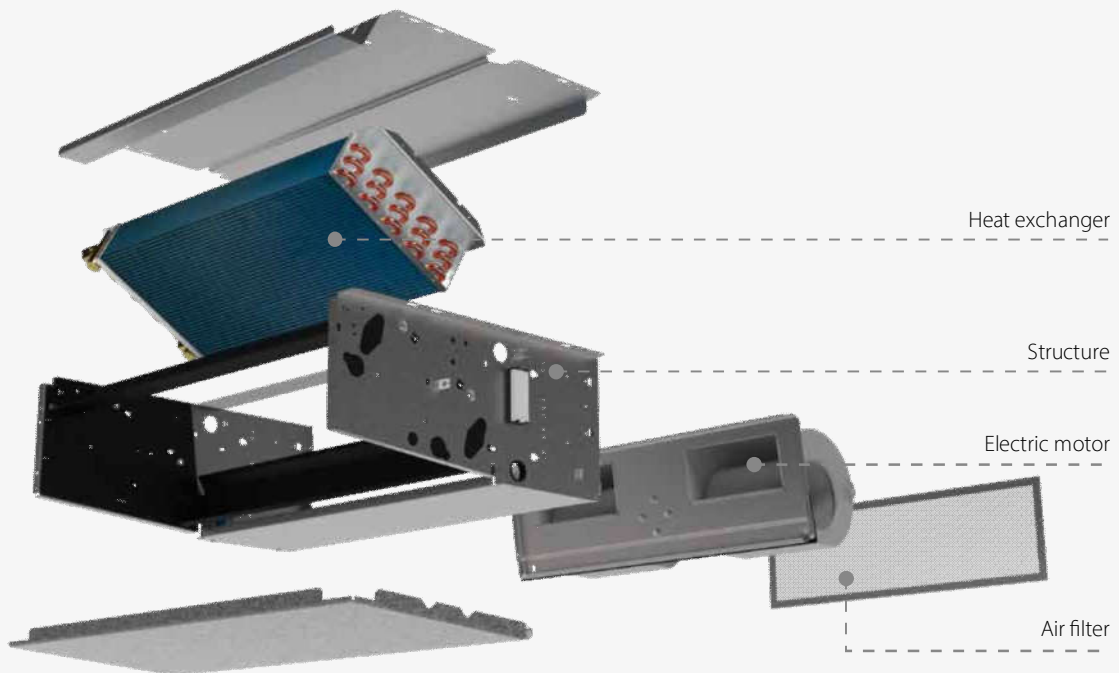
Fans

Double suction centrifugal fans, statically and dynamically balanced, manufactured from anti-static ABS, with blades having an airfoil section and offset modules. The fans are housed in a low-noise ABS volute with high-efficiency profile.



Air filter

Honey-comb polypropylene washable air filter, easily removable for maintenance operations. Filter with G2 filtration class also available.



Fan Coil FHP

CONFIGURATOR

The models are completely configurable by selecting the version and the options. To the right is shown an example of configuration.

Version	Field	1	2	3	4	5	6	7	8	9	10	11
ED05		C	0	L	0	1	0	0	6	0	0	A

ED Product type FHP; 05 Size

To verify the compatibility of the options, use the selection software or the price list.

CONFIGURATOR

1 Version

C C - Recessed installation

2 Motor

0 3-speed motor

3 Main coil hydraulic side

L Water connections on the left side

R Water connections on the right

4 Additional coil hydraulic side / heating element

0 Absent

L Water connections on the left side

R Water connections on the right

5 Valve

0 Absent

1 VKS - 3 ways valve - 230V - ON/OFF - complete hydraulic kit

2 KV - 2 ways valve - 230V - ON/OFF

6 Control panel

0 Absent

E EVOBOARD - Circuit board

G EVOBOARD circuit board + NAVEL Wi-Fi module

7 Probes

0 Absent

1 SA - Remote air probe for MYCOMFORT, LED503 and EVO

2 SW - Water probe for MYCOMFORT, LED503 and EVO

3 SU - Humidity probe for MYCOMFORT and EVO

4 SA+SW - Remote air and water probes for MYCOMFORT, LED503 and EVO

5 SA+SU - Remote air and humidity probes for MYCOMFORT and EVO

6 SA+SU+SW- Remote air, water, humidity probes for MYCOMFORT and EVO

8 Accessories

0 Absent

4 BV - Auxiliary drip tray

5 BH - Auxiliary drip tray

6 GIVK - Insulating shell

9 Filter

0 Standard filter air

1 G2 Filter air

10 Release

0 0

A A

CONTROL PANELS

Electromechanical control panels

CD Recess wall-mounted speed switch

CDE Wall mounted speed selector

TC Thermostat for minimum water temperature in heating mode (42 °C)

Electronic microprocessor control panels with display

COB Finishing plate for LED 503 controller, RAL9005 black

COG Finishing plate for LED 503 controller, RAL7031 grey

COW Finishing plate for LED 503 controller, RAL9003 white

DIST MY COMFORT controller spacer for wall mounting

EVO-2-TOUCH 2.8" touch screen user interface for EVO control

EVOBOARD Circuit board for EVO control

EVODISP User interface with display for EVO controller

EYNAVEL Device for Wi-Fi or Bluetooth communication between EVOBOARD and smartphone

MCBE MYCOMFORT BASE electronic controller with display

MCLE Microprocessor control with display MY COMFORT LARGE

MCME MYCOMFORT MEDIUM electronic controller with display

MCSUE Humidity sensor for MY COMFORT (medium e large), EVO

MCSWE Sonda acqua per comandi MY COMFORT , EVO

Electronic microprocessor control panels

TED 2T Electronic controller for AC fan control and one ON/OFF 230 V valve

TED 4T Electronic controller for AC fan control and two ON/OFF 230 V valves

TED SWA Water temperature sensor for TED controls

ACCESSORIES

Auxiliary water drip trays, insulating shell, condensate drainage pump

BH Auxiliary water drip tray for horizontal installation fan coil units

BV Auxiliary water drip tray for vertical installation fan coil units

KSC Condensate drainage pump kit

Power interface and regulating louver controllers

CSD Recess mounted controller for opening and closing the SM motor-driven regulating louver

Base and enclosure elements

D Support elements

Air inlet and outlet grilles

GE Aluminium external air intake grille with subframe

GEF Aluminium external air intake grille with subframe and air filter

GM Aluminium air outlet grille with 2-row fins and subframe

RGC Plenum with circular collars for air outlet grille

Auxiliary water drip trays, insulating shell, condensate drainage pump

GIVKL Insulating shell for VKS valve, water connections on the left

GIVKR Insulating shell for VKS valve, water connections on the right

Power interface and regulating louver controllers

KP Power interface for connecting in parallel up to 4 fan coil units to the one controller

Electrical heating elements

RE Heating element with installation kit, relay box and safety devices

Plenum and connectors

RA90 Angular inlet connector

RAD Straight inlet connector

RADC Air inlet plenum with circular collars

RM90 Angular outlet connector

RM90C Angular outlet insulated connector

RMCD Straight outlet insulated connector

RMCD C Air outlet plenum with circular collars

RMD Straight outlet connector

External air intake louvers

S Manual external air intake louver

SM Motor-driven louver, with motor on the right with transformer

SM Motor-driven louver, with motor on the left with transformer

SMC Motor driven louver, with motor on the right, with transformer

SMC Motor driven louver, with motor on the left, with transformer

Valves

VKDF 3-way valve, ON/OFF actuator, 230 V power supply, complete hydraulic kit for additional heat exchanger

VKS 3-way valve, ON/OFF actuator, 1230 V power supply, complete hydraulic kit for main heat exchanger

KV 2-way valve, ON/OFF actuator, hydraulic kit on water connection side for main heat exchanger

KVDF 2-way valve, ON/OFF actuator, 230 V power supply, hydraulic kit on water connection side for main and additional heat exchanger

2 PIPES - RATED TECHNICAL DATA

FHP			3			4			5			6		
Speed			min	med	max	min	med	max	min	med	max	min	med	max
Declared speed			1,2,3											
Rated air flow		m ³ /h	190	220	280	190	220	280	270	370	470	270	370	470
Available static pressure		Pa	35	50	60	35	50	60	28	50	60	28	50	60
Power input	(E)	W	57	65	100	57	65	100	47	63	114	45	60	110
Total cooling capacity	(1)(E)	kW	0,97	1,09	1,17	1,19	1,31	1,55	1,52	2,24	2,39	1,76	2,64	3,03
Sensible cooling capacity	(1)(E)	kW	0,80	0,90	0,99	0,84	0,96	1,14	1,11	1,54	1,72	1,35	1,98	2,38
FCEER class	(E)		E			E			D			D		
Water flow	(1)	l/h	167	187	202	205	225	267	262	385	411	303	454	521
Water pressure drop	(1)(E)	kPa	6	7	9	4	5	6	8	13	13	8	11	13
Heating capacity	(2)(E)	kW	1,12	1,25	1,50	1,20	1,45	1,75	1,86	2,39	2,75	2,04	2,68	3,11
FCCOP class	(E)		E			E			D			C		
Water flow	(2)	l/h	192	216	258	206	249	300	320	411	473	350	461	535
Water pressure drop	(2)(E)	kPa	6	7	9	4	5	6	8	12	14	8	11	14
Total sound power level	(3)(E)	dB(A)	48	53	55	48	53	55	48	55	58	48	55	58
Inlet + radiated sound power level	(3)	dB(A)	46	51	53	46	51	53	46	53	56	46	53	56
Outlet sound power level	(3)	dB(A)	45	50	52	45	50	52	45	52	55	45	52	55

FHP			8			9		
Speed			min	med	max	min	med	max
Declared speed			1,2,3					
Rated air flow		m ³ /h	370	480	500	440	530	650
Available static pressure		Pa	28	50	60	35	50	60
Power input	(E)	W	53	85	120	60	75	120
Total cooling capacity	(1)(E)	kW	2,62	3,40	3,52	3,07	3,74	4,20
Sensible cooling capacity	(1)(E)	kW	1,87	2,37	2,45	2,19	2,56	3,04
FCEER class	(E)		C					
Water flow	(1)	l/h	451	585	605	528	644	722
Water pressure drop	(1)(E)	kPa	11	17	18	15	20	23
Heating capacity	(2)(E)	kW	2,74	3,53	3,64	3,18	3,83	4,52
FCCOP class	(E)		C					
Water flow	(2)	l/h	472	607	627	547	659	777
Water pressure drop	(2)(E)	kPa	12	18	19	15	20	23
Total sound power level	(3)(E)	dB(A)	49	56	58	52	57	59
Inlet + radiated sound power level	(3)	dB(A)	47	54	56	50	55	57
Outlet sound power level	(3)	dB(A)	46	53	55	49	54	56

(1) Water temperature 7°C/12°C, air temperature dry bulb 27°C, wet bulb 19°C (47% relative humidity) according to EN1397:2021

(2) Water temperature 45°C / 40°C, air temperature 20°C

(3) Sound power measured according to standards ISO 3741 and ISO 3742

(E) EUROVENT certified data

Power supply 230-1-50 (V-ph-Hz)

4 PIPES - RATED TECHNICAL DATA

FHP			3			4			5			6		
Speed			min	med	max	min	med	max	min	med	max	min	med	max
Declared speed			1,2,3											
Rated air flow	(E)	m ³ /h	180	210	270	180	210	270	260	360	450	260	360	450
Available static pressure	(E)	Pa	35	50	58	35	50	58	28	50	58	28	50	58
Power input	(E)	W	57	65	100	57	65	100	47	63	114	45	60	110
Total cooling capacity	(1)(E)	kW	0,94	1,05	1,14	1,15	1,27	1,50	1,48	2,17	2,32	1,71	2,56	2,94
Sensible cooling capacity	(1)(E)	kW	0,78	0,87	0,96	0,82	0,93	1,11	1,07	1,49	1,67	1,31	1,92	2,31
FCEER class	(E)		E			E			D			D		
Water flow	(2)	l/h	162	181	196	199	219	259	254	374	398	294	440	505
Water pressure drop	(2)(E)	kPa	6	7	9	4	5	6	8	13	13	8	11	13
Heating capacity	(3)(E)	kW	1,22	1,38	1,58	1,22	1,38	1,58	1,81	2,22	2,55	1,81	2,22	2,55
FCCOP class	(E)		E			E			D			D		
Water flow	(3)	l/h	210	237	272	210	237	272	311	382	439	311	382	439
Water pressure drop	(3)(E)	kPa	4	5	7	4	5	7	2	3	3	2	3	3
Total sound power level	(4)	dB(A)	48	53	55	48	53	55	48	55	58	48	55	58
Inlet + radiated sound power level	(4)(E)	dB(A)	46	51	53	46	51	53	46	53	56	46	53	56
Outlet sound power level	(4)(E)	dB(A)	45	50	52	45	50	52	45	52	55	45	52	55

FHP			8			9		
Speed			min	med	max	min	med	max
Declared speed			1,2,3					
Rated air flow	(E)	m ³ /h	360	460	480	420	510	630
Available static pressure	(E)	Pa	28	50	58	35	50	58
Power input	(E)	W	53	85	120	60	75	120
Total cooling capacity	(1)(E)	kW	2,54	3,30	3,41	2,98	3,63	4,07
Sensible cooling capacity	(1)(E)	kW	1,82	2,30	2,37	2,13	2,49	2,95
FCEER class	(E)		C					
Water flow	(2)	l/h	437	567	587	512	625	700
Water pressure drop	(2)(E)	kPa	11	17	18	15	20	23
Heating capacity	(3)(E)	kW	2,73	3,15	3,22	3,00	3,35	3,84
FCCOP class	(E)		C					
Water flow	(3)	l/h	470	542	554	516	576	660
Water pressure drop	(3)(E)	kPa	3	4	5	4	5	7
Total sound power level	(4)	dB(A)	49	56	58	52	57	59
Inlet + radiated sound power level	(4)(E)	dB(A)	47	54	56	50	55	57
Outlet sound power level	(4)(E)	dB(A)	46	53	55	49	54	56

(1) Water temperature 7°C/12°C, air temperature dry bulb 27°C, wet bulb 19°C (47% relative humidity) according to EN1397:2021

(2) Water temperature 7°C / 12°C, air temperature dry bulb 27°C, wet bulb 19°C (47% relative humidity)

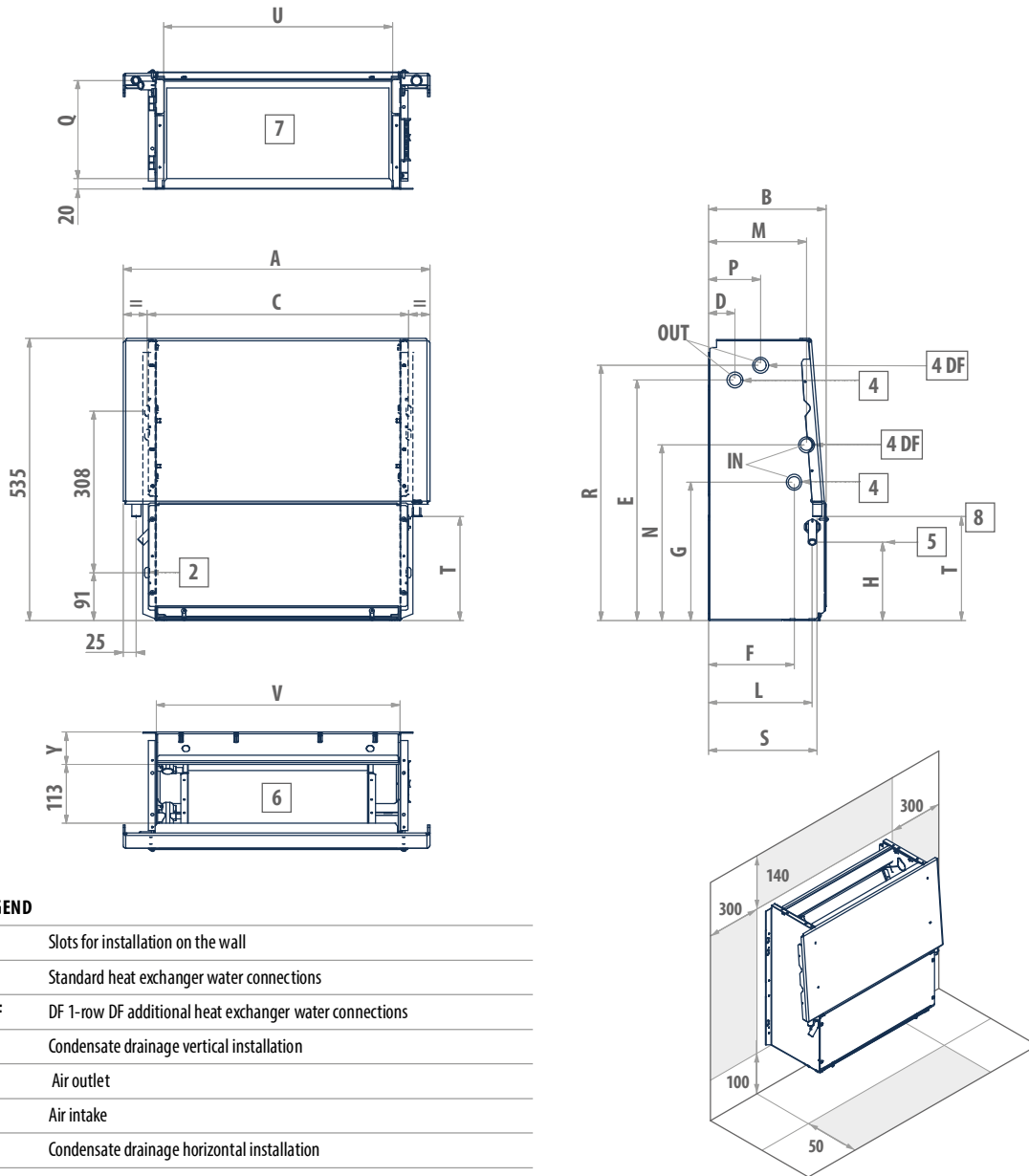
(3) Water temperature 65°C / 55°C, air temperature 20°C

(4) Sound power measured according to standards ISO 3741 and ISO 3742

(E) EUROVENT certified data

Power supply 230-1-50 (V-ph-Hz)

DIMENSIONAL DRAWINGS

FHP

LEGEND

2	Slots for installation on the wall
4	Standard heat exchanger water connections
4DF	DF 1-row DF additional heat exchanger water connections
5	Condensate drainage vertical installation
6	Air outlet
7	Air intake
8	Condensate drainage horizontal installation

FHP	A	B	C	D	E	F	G	H	L	M	N	P	Q	R	S	T	U	V	Y	4	kg
	mm	mm	mm	mm	mm	mm	mm	mm	mm	mm	mm	mm	mm	mm	mm	mm	mm	mm	mm	"	
3-4	584	224	498	51	458	163	263	149	198	187	335	99	189	486	208	198	436	464	61	1/2	18
5-6	794	224	708	51	458	163	263	149	198	187	335	99	189	486	208	198	646	674	61	1/2	23
8-9	1004	224	918	51	458	163	263	149	198	187	335	99	189	486	208	198	856	884	61	1/2	27