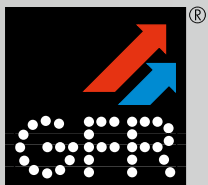


The solution for your building

WEBVISION 5





energy efficiency is our business.

GFR – Gesellschaft für Regelungstechnik und Energieeinsparung mbH

Being one of the leading providers in our branch, we develop and sell innovative system solutions for building automation and energy management.

We have been taking care of saving energy for more than 35 years.

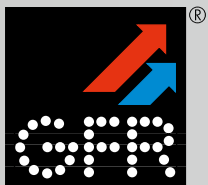
Our name is our commitment and our mission is more relevant than ever before. Buildings being automated by GFR are not only economically optimised but also reduce CO₂ emissions, provide increased sustainability and a better future.

We look forward to giving you a short insight into WEBVISION 5 - the new generation of building management software.



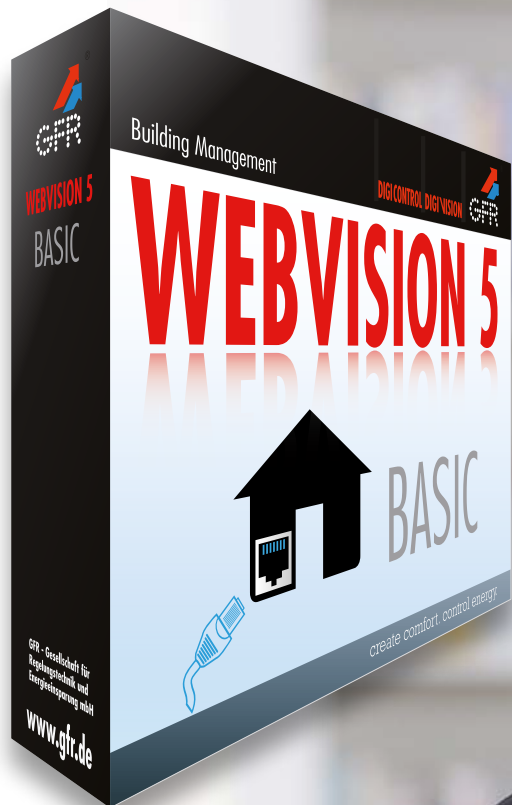
Content

	Page
WEBVISION 5 – The new generation of building management software	4 - 5
They key to success for your building	6
WEBVISION 5 - The solution for your building	7
Planning building management systems effectively from the very beginning	8 - 9
What is the purpose of integration?	10 - 11
Simple and intuitive: Operation using mobile devices	12
The future is now: The cloud solution	13
WEBVISION 5 - My building management	14-15
WEBVISION 5 - Module Project explorer	16
WEBVISION 5 - Module Webbuilder	17
WEBVISION 5 - Module Trend	18
WEBVISION 5 - Module Alarm & Event	19
WEBVISION 5 - Module User management	20
WEBVISION 5 - Module Visualisation	21
WEBVISION 5 - Module Energy flow chart	22
WEBVISION 5 - Module Managing facilities	23
WEBVISION 5 Applications - DASHBOARD Displaying building and energy data clearly at a glance	24
WEBVISION 5 Applications - RoomTimePlanner Saving energy through efficient utilisation times and set point values of rooms	25
System topology Consistent - comprehensive - complete	26 - 27



WEBVISION 5

The new generation of building management software



About **80%** of total costs arising within the life cycle of a building account for its operation.

The share of all buildings in the world-wide primary energy consumption is at **40%** per year.

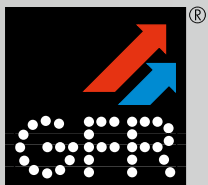
Thus, there is a huge potential to contribute to the economy and responsible use of resources by effectively operating buildings. WEBVISION 5 takes up this challenge.

The top reasons for WEBVISION 5

1. WEBVISION 5 supports you in reducing the CO₂ emissions considerably and operating your building more efficiently. **Cost savings of up to 15-20% are realistic.**
2. WEBVISION 5 simultaneously ensures **100% comfort with maximum energy efficiency.** Terms like performance, security and user-friendliness are completely redefined by WEBVISION 5.



3. Having one building management is sufficient. **WEBVISION 5 allows controlling and optimising all maintenance groups** in a building: from heating, ventilation, air-conditioning, sanitary, illumination, shading, room automation, energy data management, fire protection, video surveillance, burglary protection to access control.
4. Take advantage of our know-how. **WEBVISION 5 was developed in-house and is based on our 35 years' experience** in creating intelligent building management systems.
5. Being an integral part of the building management system DIGICONTROL and system engineering WEBPROJECT, **WEBVISION 5 provides an unprecedented consistency from planning to operating and optimising smart buildings.**
6. The **intuitive operation** of WEBVISION 5 simplifies the handling for users, spanning from overviews down to data points. This builds trust, operating the system is a pleasure and **users are not afraid of utilising the software.**
7. WEBVISION 5 does not only provide **maximum reliability but also data and IT security.** It ensures 100% availability in connection with high-availability servers, particularly for plants with increased security requirements.



They key to success for your building

The seven rules

1. Optimise the comfort.

WEBVISION 5 sets standards for the performance of buildings. The innovative solutions and services provide an **optimum balance between efficiency and comfort**.

2. Minimise the energy demand.

WEBVISION 5 takes advantage of synergies within all technical sections and increases the functionality of the trades because they interact in a network. If you combine WEBVISION 5 with the energy data management system WEBENCON, you can **save up to 20% of your energy costs**.

3. Make your building safer.

WEBVISION 5 is a state-of-the-art solution and provides maximum security, safety and functionality for building operators and users. This is possible due to the integration of security systems and the high reliability of our DIGICONTROL automation systems.

4. Improve the sustainability of your building.

WEBVISION 5 supports you in optimising the economic potential of your building and in increasing the benefit for human beings and society. The system contributes significantly to sustainability and the preservation of the ecosystem and environment.

5. Protect your investments.

The requirements for buildings constantly change during their life cycle. WEBVISION 5 has a flexible structure and is prepared for changing building utilisation. Many of our customers have appreciated the benefit of compatible building automation systems **since 1978 until today, and also in the future**.

6. Sustain values.

WEBVISION 5 uses resources economically, reduces the adverse environmental impacts and helps to create and maintain values.

7. Improve your image.

WEBVISION 5 ensures energy-efficient and resource-saving operation of buildings. This is perceived by the general public and your company will enjoy a positive image and reputation.

WEBVISION 5

The solution for your building



Hospitals

The focus when running hospitals is on **economic efficiency, security and hygiene**. Being furnished with functional and integration modules, WEBVISION 5 offers a complete management system which also meets the complex requirements of modern hospitals.



Administration centres

WEBVISION 5 ensures **perfect working conditions** and optimum comfort at maximum energy-efficiency. It contains **flexible solutions** which adapt the management system to changing space divisions and room utilisations.



Educational institutions

Energy-efficient building systems provide **excellent learning conditions** under consideration of variable occupation densities and times. WEBVISION 5 comprises all modules for the optimum and energy-efficient operation of rooms and halls.



Shopping Malls

A building system in the trade sector has to be flexible as it relates to changes in space utilisation and sizes, branch structures, opening hours and customer frequencies. WEBVISION 5 offers **maximum flexibility and transparency** by integrating supra-regional branch networks.



Hotels

The changing occupation densities and times of rooms and unequal people's feelings of comfort are the special characteristics of the hotel business. WEBVISION 5 ensures **maximum energy utilisation and minimum costs for the operator** by integrating hotel reservation systems.



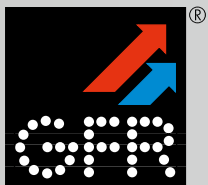
Event locations

Locations like gymnasiums, multifunctional arenas or theatres provide special potentials for optimisation due to their functional diversities. WEBVISION 5 enables the integration of all trades of technical building services and is the **basis for a secure and economical operation of the facility**.



Living

Building automation and management system have to meet individual requirements in the living area. Rooms for living, sleeping, cooking and working are used differently at various day and night times and by **occupants of different ages and preferences**.



Planning building management systems effectively ... from the very beginning

Efficient building management starts with integral planning

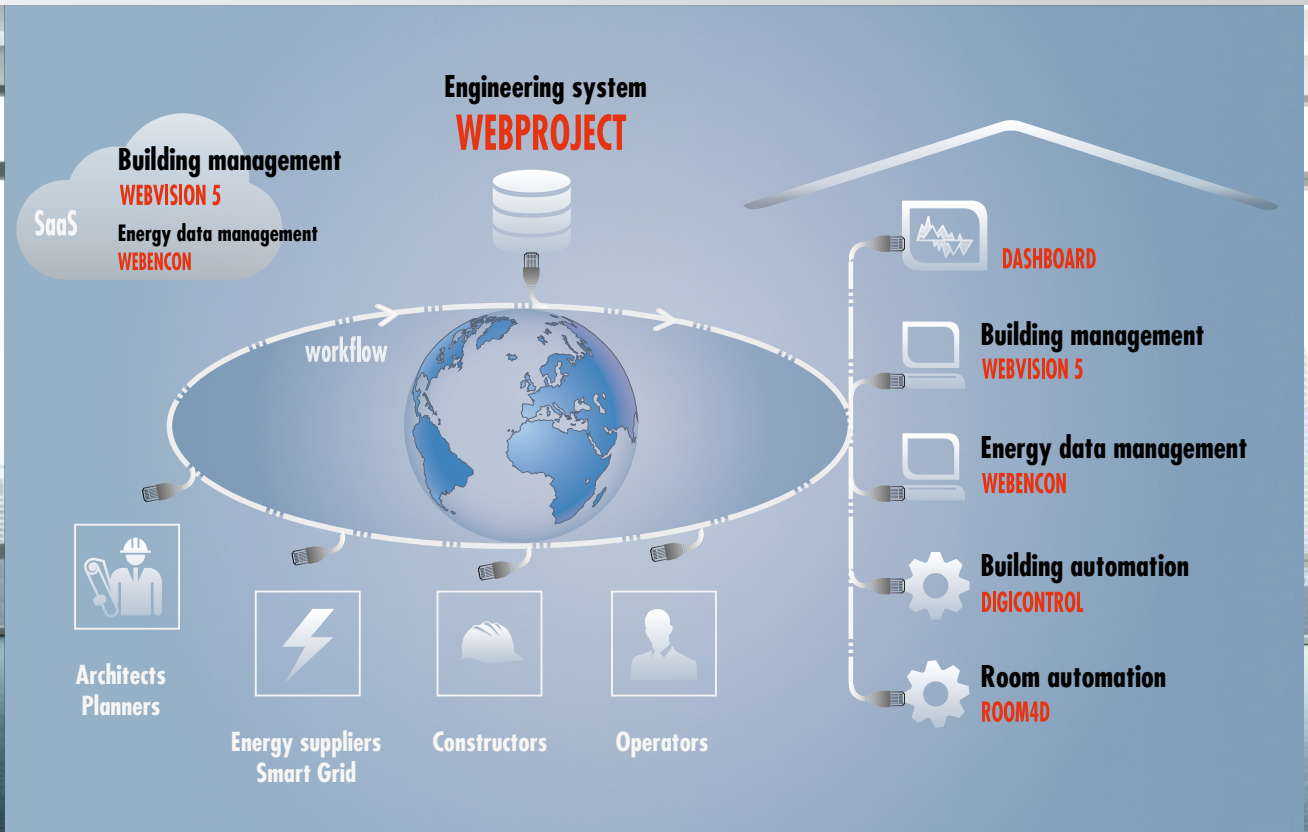
Complex building automation systems represent the prerequisite for smart buildings. The higher the degrees of integration, the better are the chances for using synergies and optimising energy-efficiency, sustainability and security.

A planning network and the coordination of all involved parties are required for recognising and taking advantage of arising opportunities. The implementation involves integral planning processes on basis of entire system engineering.

All project and automation data from WEBPROJECT and webCADpro (parameter setting of controllers) constitute the basis for the installation and automated configuration of hierarchical menus, operating pages and plant graphics of WEBVISION 5. This is why WEBVISION 5 offers maximum efficiency right from the phase of engineering.

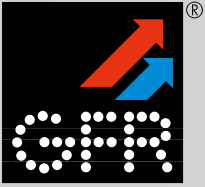
This ensures considerable time and cost savings, reduces the service expenses to a minimum and ensures 100% consistency from planning to operation.

The digitalised project and product data are used for the communication with further building systems, like facility management or Smart Grid and provide the basis for the integration of the technical building management into building information modelling systems (BIM).



WEBPROJECT is the basis of all building automation data and enables architects, planners, energy suppliers, automation specialists, builders and operators to start their networked and integral planning.

- **WEBVISION 5 offers maximum efficiency right from the planning phase.**
- **WEBPROJECT is the basis of all up-to-date planning data and can be easily accessed online by all people involved.**
- **The digitalised project and product data can be made available for further systems.**



What is the purpose of integration?



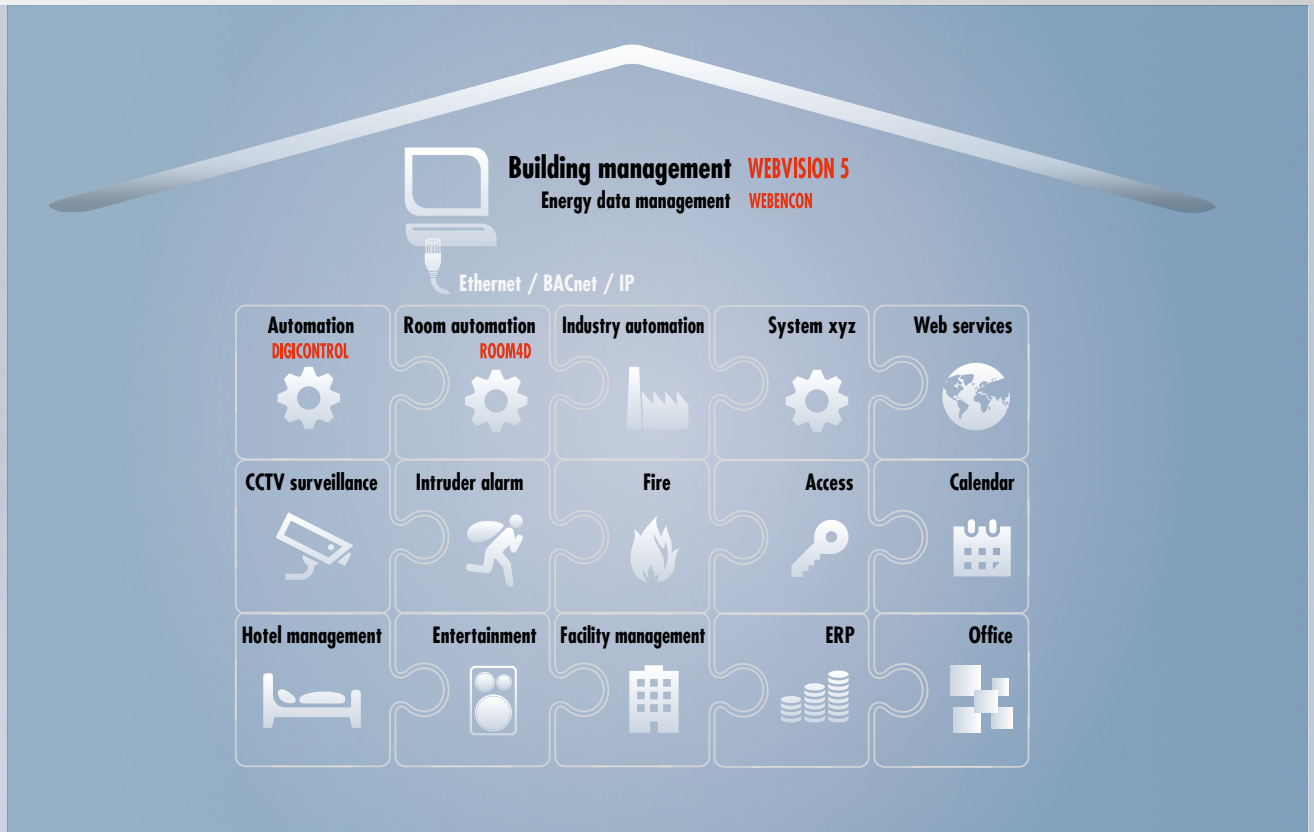
Integration - The basis for operating buildings energy-efficiently and comfortably

WEBVISION 5 implies the effective interaction of all automation systems and further components of the technical building services. The open system architecture, the application of world-wide standards and uniform interfaces provide maximum flexibility for the implementation of integration solutions.

WEBVISION 5 supports standard protocols like BACnet, Meter bus, Modbus and OPC which allows the integration of third-party products.

The BACnet standard in WEBVISION 5 which is supported by the B-AWS (BACnet Advanced Workstation) profile ensures an open communication, the compatibility with products from other manufacturers and the energy-saving and reliable operation of plants.

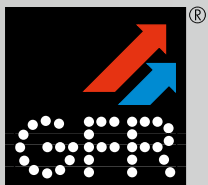
WEBVISION 5, particularly in combination with the certified automation system DIGICONTROL ems2 - BACnet Building Controller (B-BC) / BACnet Protocol Revision: 1.12 / DIN EN ISO 16484-5 / AMEV Profile: AS-B, constitutes a highly effective tool for energy-efficient and sustainable buildings.



Open interfaces enable the integration of all building trades like alarm systems, fire detection systems, ERP systems, office systems, facility management, hotel management, entertainment systems and industrial automation.

Synergies resulting from the integration of all systems of the technical building services can be used for various purposes like

- **Enhancement of security**
- **Improvement of functionality**
- **Optimisation of energy-efficiency**
- **Improvement of comfort**



Simple and intuitive: Operation via mobile devices



Common practice today

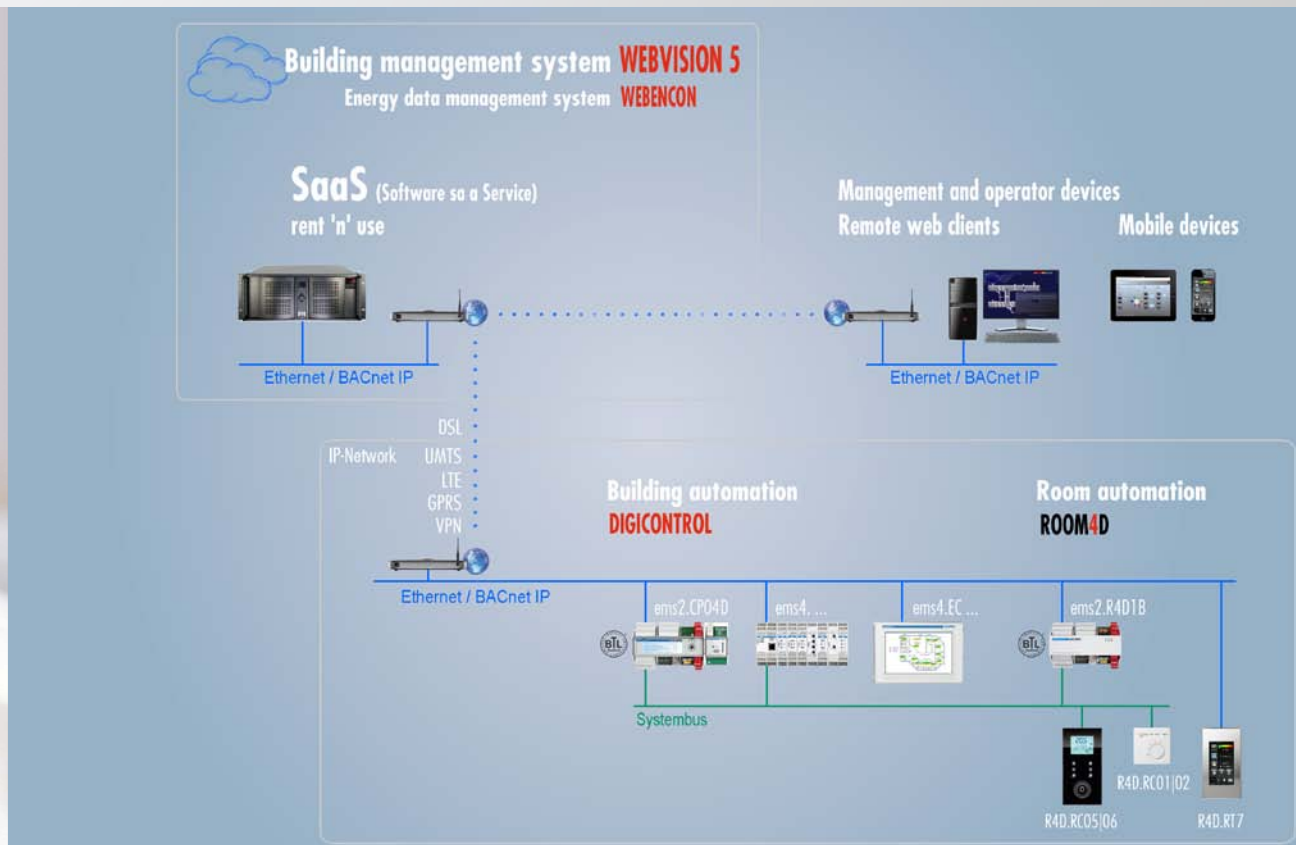
As simple and intuitive as operating smartphones and tablet PCs. That is your demand which is indeed met by WEBVISION 5.

Mobile communication and building system technology are steadily growing together. WEBVISION 5 introduces a new dimension of mobile operation. You are entirely independent and in control in a comfortable and safe way, even though you are off-site.

Installing the app is not necessary as everything works by means of a web browser. You always get the optimum view, independent from the device, the operating system and the screen size. The simple navigation enables you to access the desired information quickly and efficiently.

Another highlight: Mobile usage is facilitated substantially by a cutting-edge search function which is directly performed from the start page and provides comprehensive results. Thus, you can find all requested information at a glance: technical plants, messages, operating modes and everything else you are looking for.

The future is now: The cloud solution

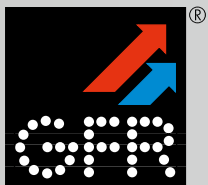


Highly efficient: **SaaS** (Software as a Service)

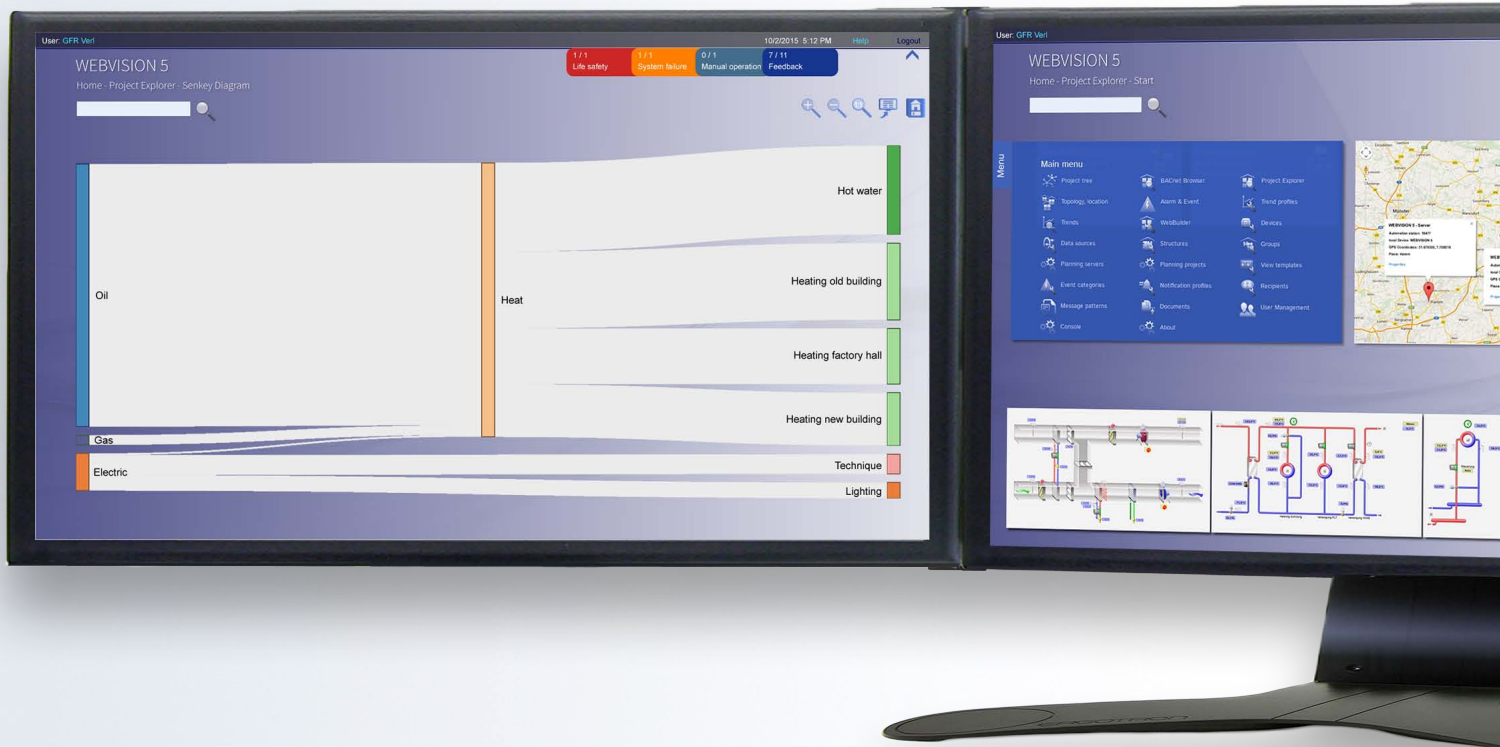
The rent'n'use model means that WEBVISION 5 is not installed on your local server but on a web server in our data centre where you can access it via web browser without having any function restrictions.

Your benefits

- No investment for hard and software
- Moderate and predictable rental charges according to the number of integrated controllers
- Building management software is always up-to-date
- No costs for maintenance and repairs
- No administrative costs
- Secure internet availability from every location in the world
- High availability: The leased server is available 24 hours seven days a week
- Enterprise firewall protection by means of a redundant firewall cluster



WEBVISION 5 - My building management

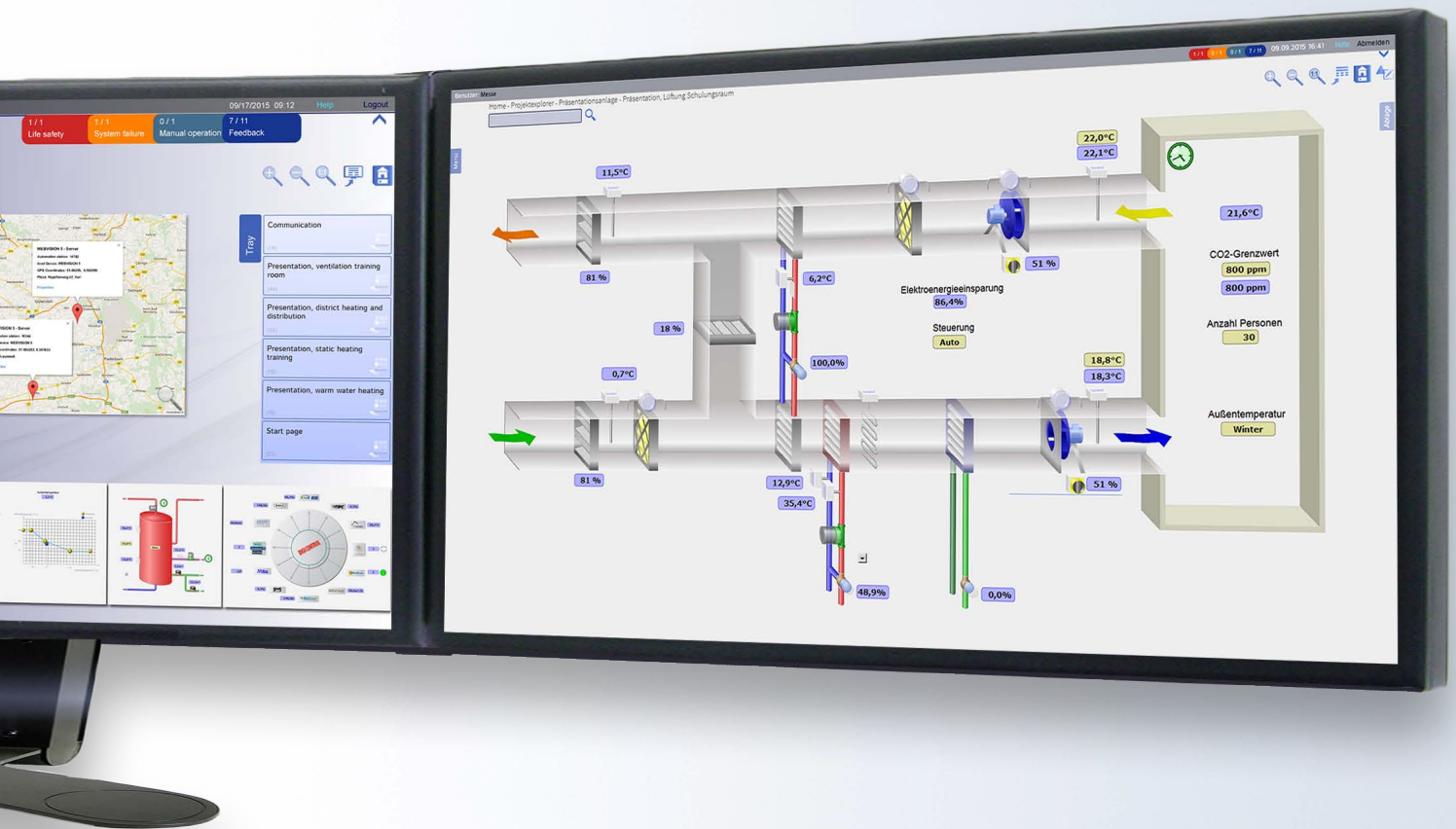


Intuitive operation

WEBVISION 5 offers state-of-the-art handling by providing optimum comfort and intuitive operation from the system overview down to the data point. **This builds trust, operating the system is a pleasure and users are not afraid of utilising the software.**

Customised individual solutions

The open system structure of WEBVISION 5 allows a personalised customisation of user interfaces. The configuration of the interface contents is performed dependent on the user role, responsibility and personal preference of the respective user. Accordingly, tailor-made user interfaces and individual solutions are made available.



WEBVISION 5 is based on global and uniform IT standards

- Operating system Windows Server 2012
- SQL server data bases
- Compatible with standard web browsers (also mobile)
- High availability server (on request)
- Standard interfaces for the integration of third-party software
- BACnet profile B-AWS (BACnet Advanced Workstation)

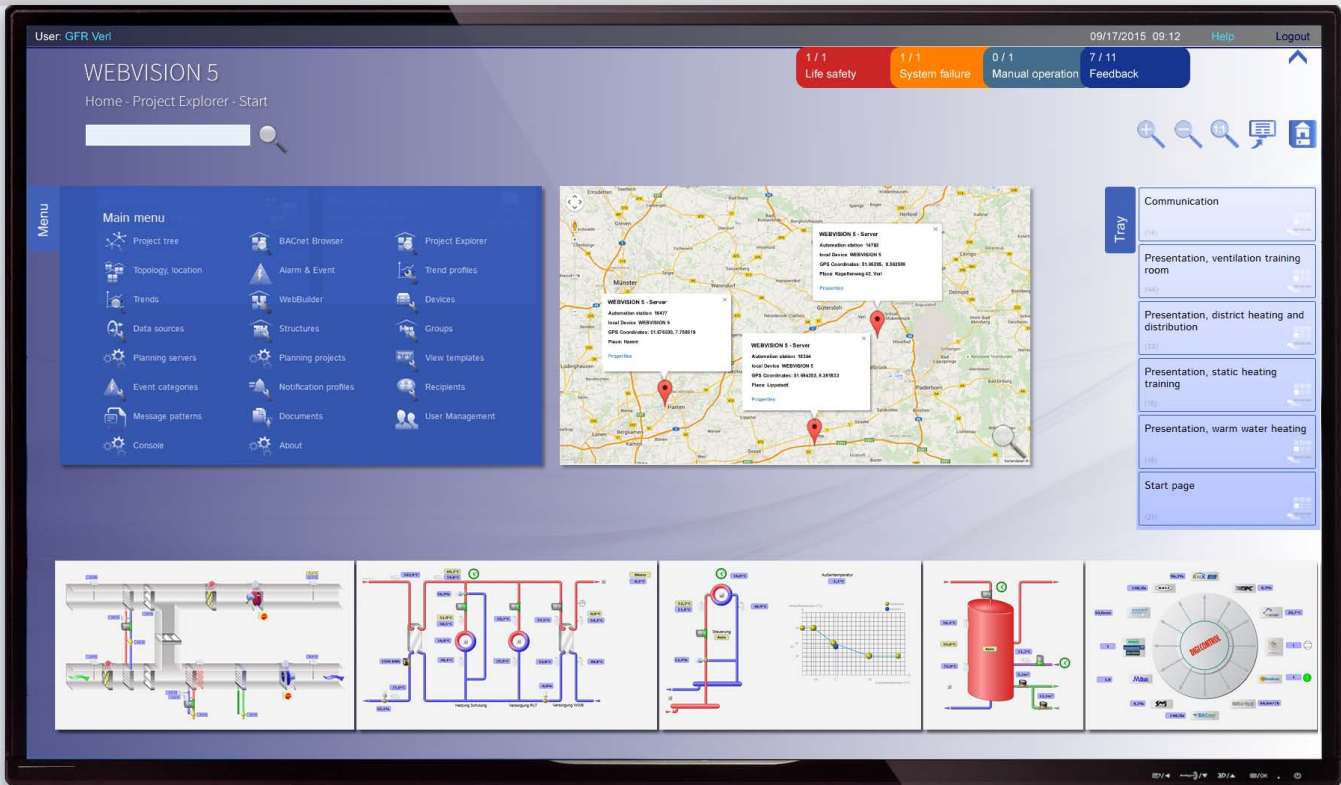
WEBVISION 5 is multicultural

- Support of any language and culture
- Support of any physical unit and number format



Project explorer

The WEBVISION 5 project explorer allows the comfortable and intuitive operation of the building management system.



Tailor-made user interfaces

- Individually adjustable navigation views: tiles, lists or project tree
- Simple access to user-relevant set point values
- Displaying system feedback messages of user actions
- Support of parallel user instances, e.g. planning, test and productive system or previous version
- Support of variable structure types like plant, rental areas and location structure, etc.

You shall not search but find

- The search function for all system components like plants, groups, graphics, trends, trend profiles, documents, data points, messages, notifications, etc. allows to find the searched topic quickly and easily.
- The advanced search function enables the navigation within the search results. The user immediately gets all information on further connections of the searched topic.

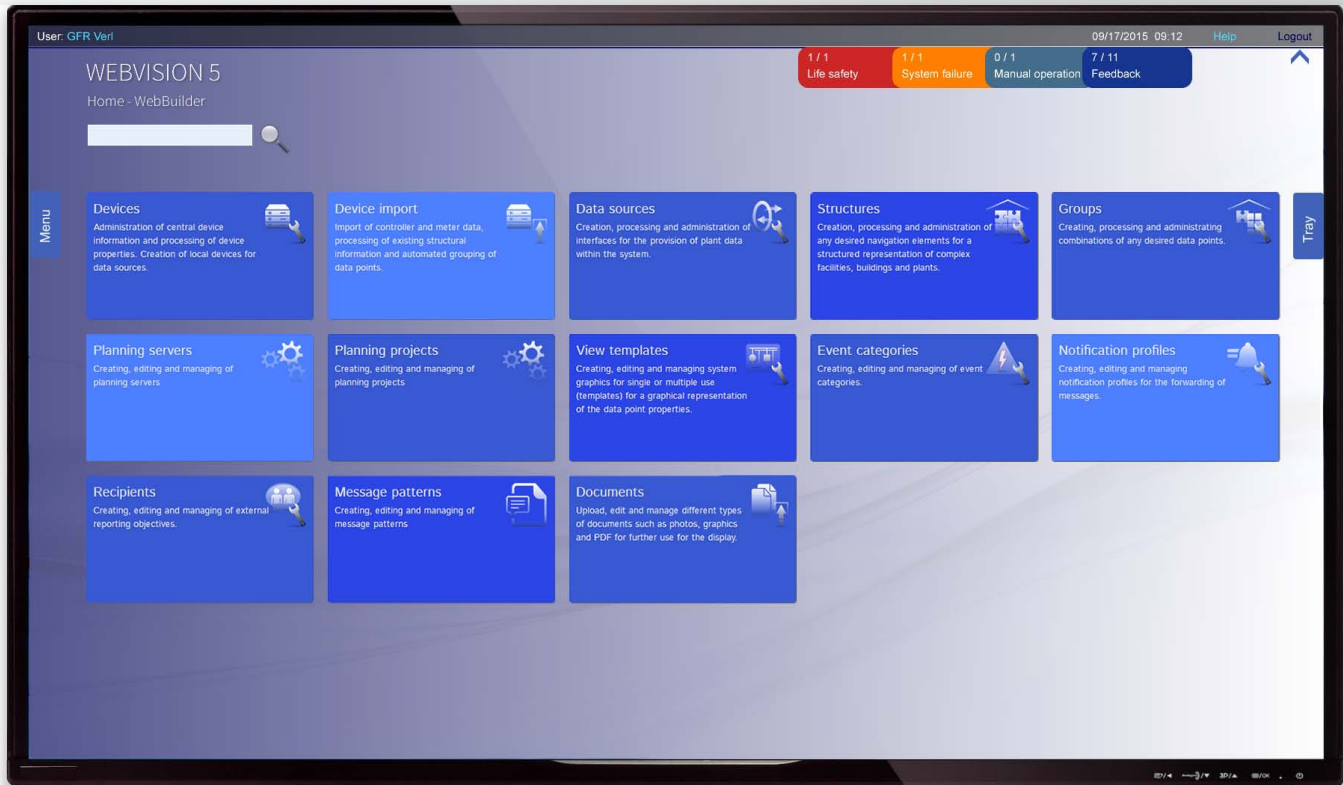
Present correlations comprehensively

- Parallel representation of plant structures (Engineering, Accounting, Administration)
- Display of data point groups



Webbuilder

The WEBVISION 5 Webbuilder is used for configuring the building management system. A huge number of automated processes are employed here.



Impressively fast and reliable configuration

- Import of WEBPROJECT engineering data
- Import of DIGICONTROL automation data
- Import of all BACnet data
- Administration of any data source

Saving time through using templates

- Taking advantage of templates for dynamised plant graphics, diagrams, users, ...

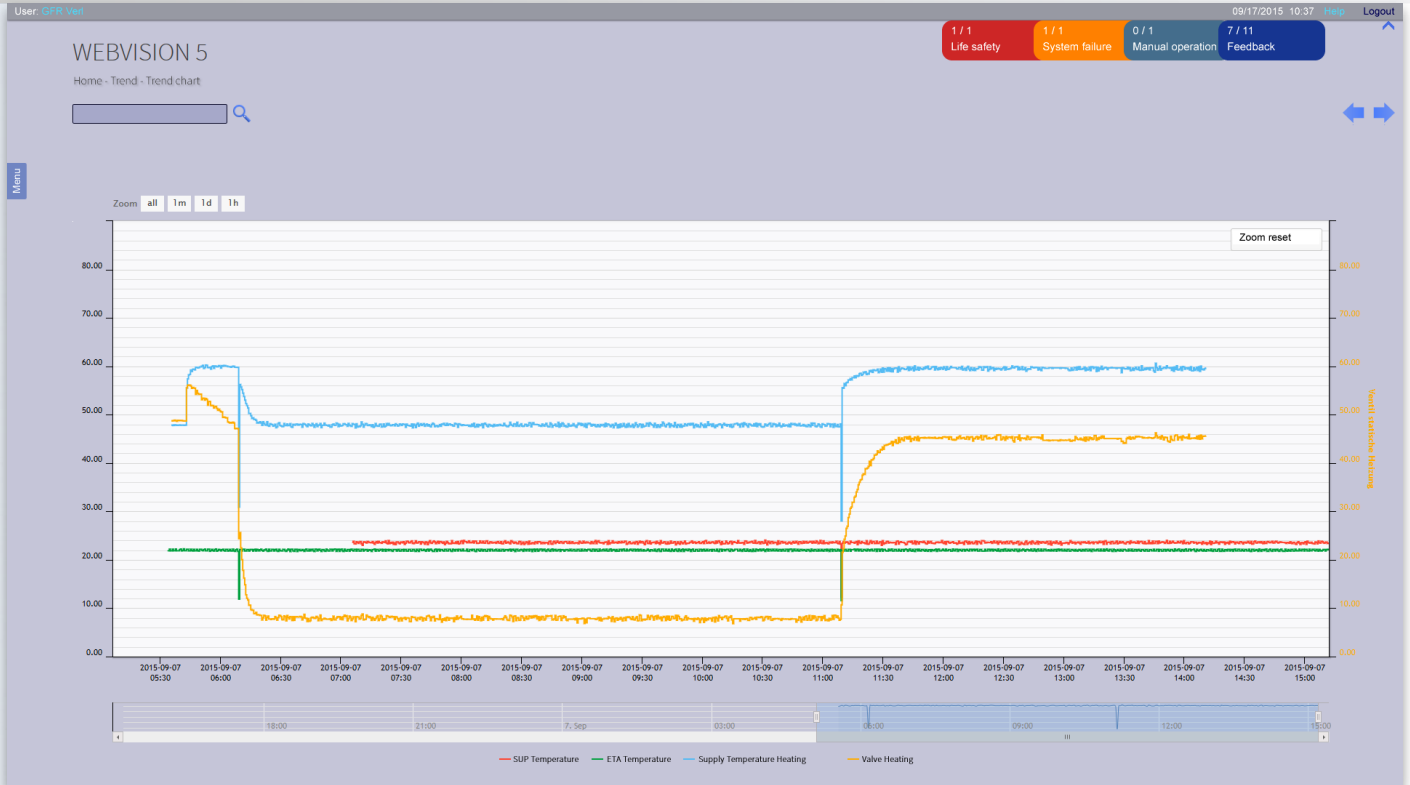
Drag and Drop

- Creation of individual navigation structures
- Arbitrary assignment of trades, groups, plants and graphics to navigation structure
- Filing tray for saving frequently used applications



Trend

The WEBVISION 5 trend module allows to evaluate historical plant data and to process notification statistics and value/status changes in connection with logged trend /event data.



Simplifying the visualisation of historical data

- Up to 12 trends, distributed on either one or two time axes
- 4 Y axes
- Zoom function down to the smallest detail
- Freely configurable trend profiles



Alarm & Event

The WEBVISION 5 alarm and event module is used for processing and visualising events and notifications of the building automation system. The module meets the requirements of VDI/VDE 3699 sheet 5 (Process control with screens, alarm messages).

The screenshot shows the WEBVISION 5 interface. At the top, there's a status bar with indicators for Life safety (1/1), System failure (1/1), Manual operation (0/1), and Feedback (7/11). The main area displays several alarm cards, each with a bell icon and a count of active alarms. A notification window is open, showing details for an intruder alarm triggered on 10/8/2015 at 5:18:58 PM. The notification details include: Timestamp: 10/8/2015 5:22:00 PM, Real estate: presentation, Plant: heating / ventilation, Notification text: intruder, Object name: DEMO-003-A-001-00924, Acknowledgment required: True, Priority: 1, Event state after state change: Offnormal, and Frequency: 128168.

Always in the foreground

- Simultaneously to the application, the user interface displays the messages and information which are important for the user in the foreground. This representation is performed in a sorted and categorised way while using different background colours.

Overlooking and forgetting made impossible

- Present notification statistics on every page
- Immediate overview of notification and alarm priorities
- Configured overviews for present, historical and system notifications
- Freely configurable alarm and event categories for the represented information within a statistic
- Advanced filter functions
- Acknowledgement of individual notifications and group acknowledgement
- Acknowledgement is immediately visible through symbol change and user name



User management

The WEBVISION 5 user management allows the administration of complex user structures and user roles with various rights (e.g. working with modules, functions, documents and the system itself).

User: Messe EN Logout

USER MANAGEMENT

Home

USERS

Here you can register, edit, deactivate or lock users and also assign user roles.

USER PROFILES

Manage here your user profiles for easy creation of users with identical properties.

ROLES

Manage the available roles and their rights and other authorization values.

SETTINGS

Manage application-specific and general settings of tenants and users.

Right	Activated
Activate user	<input checked="" type="checkbox"/>
Activate user profile	<input checked="" type="checkbox"/>
Add authorization rule	<input checked="" type="checkbox"/>
Add right	<input checked="" type="checkbox"/>
Add tenant application instance	<input checked="" type="checkbox"/>
Add user profile role	<input checked="" type="checkbox"/>
Add user role	<input checked="" type="checkbox"/>
Application details	<input checked="" type="checkbox"/>
Application instance details	<input checked="" type="checkbox"/>
Application instance list	<input checked="" type="checkbox"/>
Application list	<input checked="" type="checkbox"/>
Assign or remove application instance user	<input checked="" type="checkbox"/>
Authorization rule list	<input checked="" type="checkbox"/>
Create role	<input checked="" type="checkbox"/>
Create tenant	<input checked="" type="checkbox"/>
Create user	<input checked="" type="checkbox"/>
Create user profile	<input checked="" type="checkbox"/>
Deactivate user	<input checked="" type="checkbox"/>
Deactivate user profile	<input checked="" type="checkbox"/>
Delete application	<input checked="" type="checkbox"/>
Delete application instance	<input checked="" type="checkbox"/>
Delete role	<input checked="" type="checkbox"/>
Delete setting	<input checked="" type="checkbox"/>
Delete tenant	<input checked="" type="checkbox"/>
Delete user profile	<input checked="" type="checkbox"/>
Edit application	<input checked="" type="checkbox"/>
Edit application instance	<input checked="" type="checkbox"/>
Edit tenant	<input checked="" type="checkbox"/>
Export authorization rules	<input checked="" type="checkbox"/>
Export settings	<input checked="" type="checkbox"/>
Export tenants	<input checked="" type="checkbox"/>
Import authorization variables	<input checked="" type="checkbox"/>
Import setting variables	<input checked="" type="checkbox"/>
Import tenants from WEBENCON	<input checked="" type="checkbox"/>
Import users from WEBVISION 4	<input checked="" type="checkbox"/>
Lock user	<input checked="" type="checkbox"/>
Modify role	<input checked="" type="checkbox"/>
Modify user	<input checked="" type="checkbox"/>
Modify user profile	<input checked="" type="checkbox"/>
Register application	<input checked="" type="checkbox"/>
Register application instance	<input checked="" type="checkbox"/>
Remove authorization rule	<input checked="" type="checkbox"/>
Remove right	<input checked="" type="checkbox"/>
Remove tenant application instance	<input checked="" type="checkbox"/>
Remove user profile role	<input checked="" type="checkbox"/>
Remove user role	<input checked="" type="checkbox"/>
Right list	<input checked="" type="checkbox"/>
Role details	<input checked="" type="checkbox"/>
Role list	<input checked="" type="checkbox"/>
Save setting	<input checked="" type="checkbox"/>
Setting variable list	<input checked="" type="checkbox"/>
Tenant application instance list	<input checked="" type="checkbox"/>
Tenant details	<input checked="" type="checkbox"/>
Tenant list	<input checked="" type="checkbox"/>
User details	<input checked="" type="checkbox"/>
User list	<input checked="" type="checkbox"/>
User profile details	<input checked="" type="checkbox"/>
User profile list	<input checked="" type="checkbox"/>
User profile roles	<input checked="" type="checkbox"/>
User profile settings	<input checked="" type="checkbox"/>
User role list	<input checked="" type="checkbox"/>
User settings	<input checked="" type="checkbox"/>
View setting	<input checked="" type="checkbox"/>

From the facility manager down to the janitor

- Flexible and easily configurable authorisation concept
- User roles with summarised individual rights

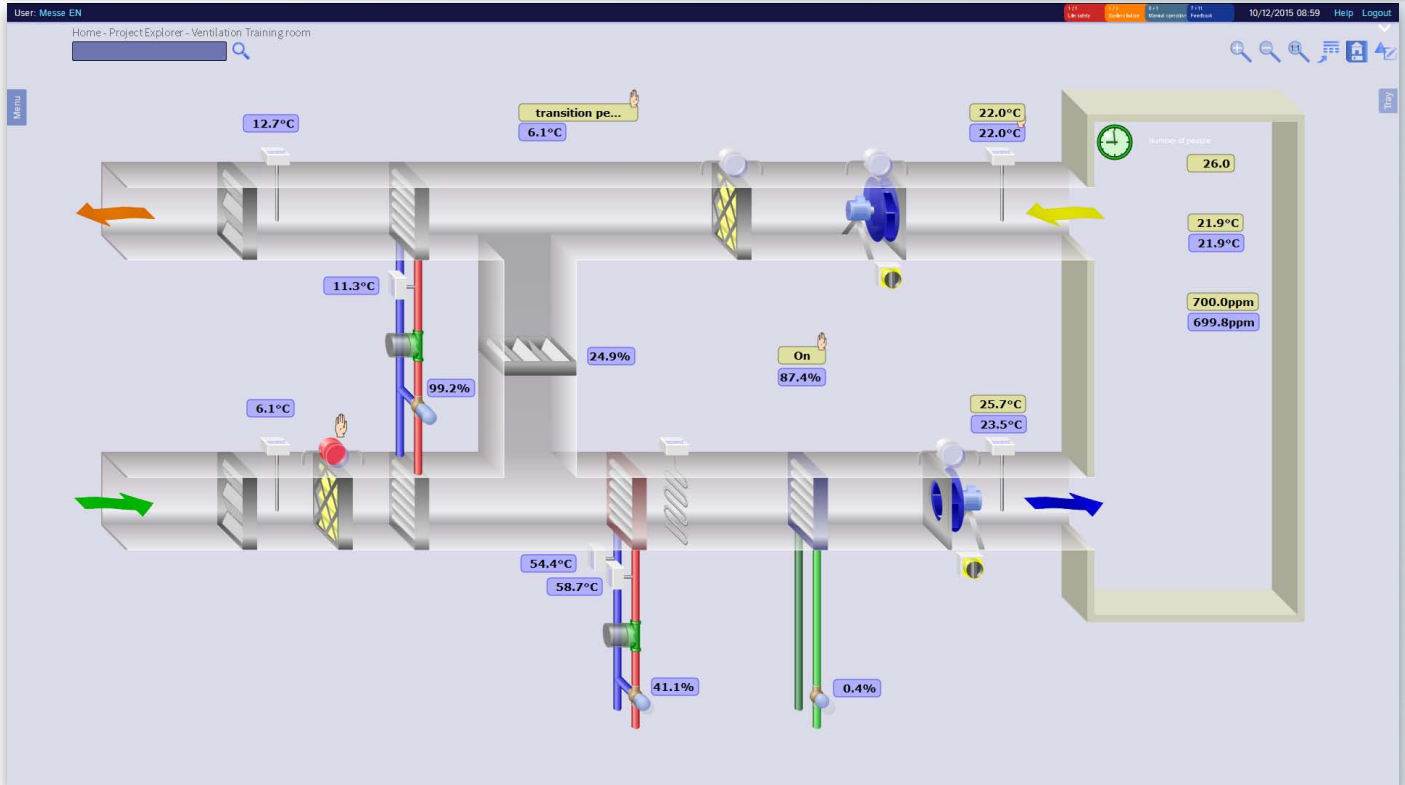
Tenant-capable

- Managing several projects of one or different customers on one system where every user (tenant) can only access his data.
- Central installation and maintenance of the software
- Low memory requirements
- Reduced costs



Visualisation

WEBVISION 5 realises a three-dimensional visualisation and animation of technical building services on basis of scalable vector graphics.



As large or as small as you desire

- Arbitrarily zoomable plant graphics (without additional installations or plug-ins)
The visualisation of the symbols and plants is performed in vector format. The freely adjustable and loss-free scalability is one of the essential characteristics and benefits in contrast to the conventional visualisation by means of raster graphics.
- Semantic zoom (displaying and hiding information)
Unlike the standard graphic zoom which scales the details of objects up or down, the semantic zoom modifies the graphical representation, the display of the structure and the selection of data.
- Optional: Three-dimensional plant graphics

Responsive design

- Automatically scalable and flexible screens on stationary and mobile devices

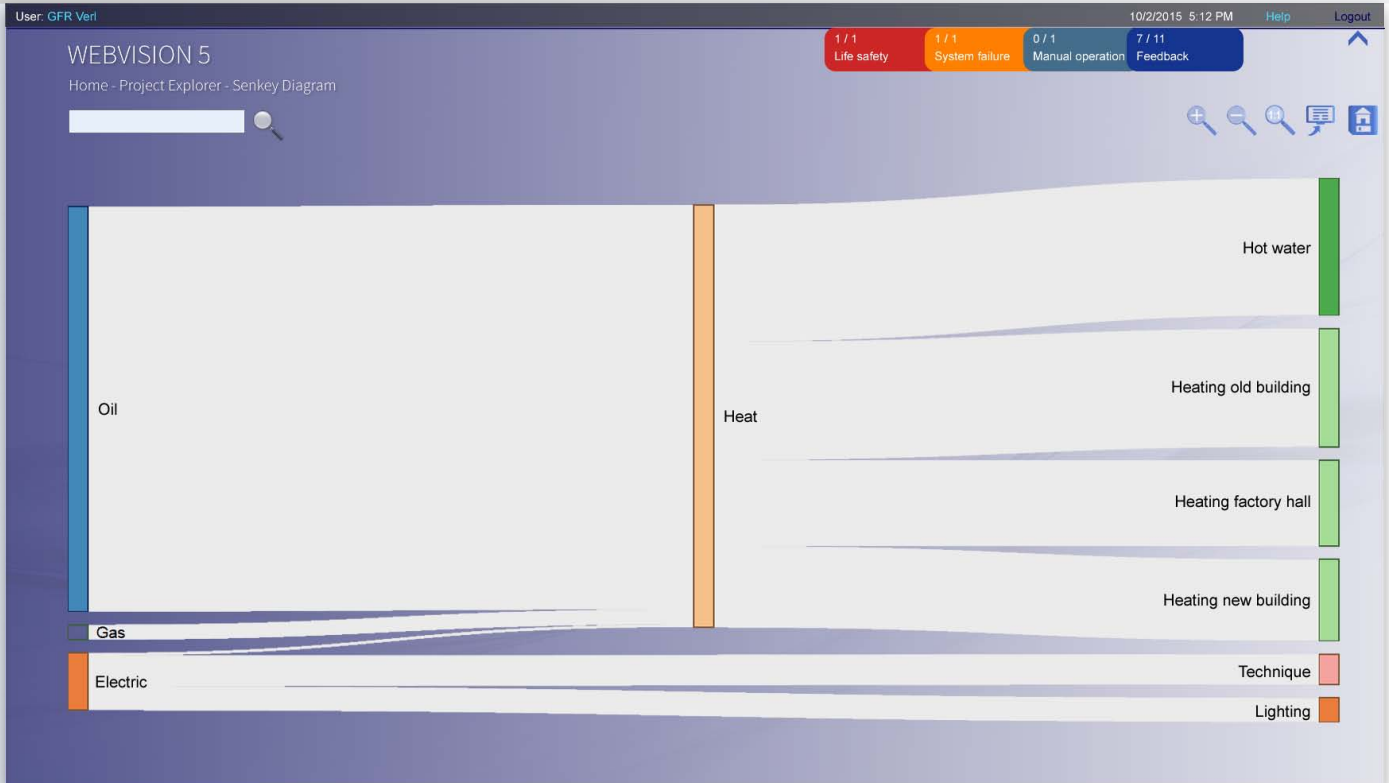
A matter of taste

- Take advantage of the excellent designs of WEBVISION 5. Here you have access to adjustable background colours and styles to match your individual taste.



Energy flow charts

WEBVISION 5 enables the graphical representation of quantity flows via Sankey diagrams.



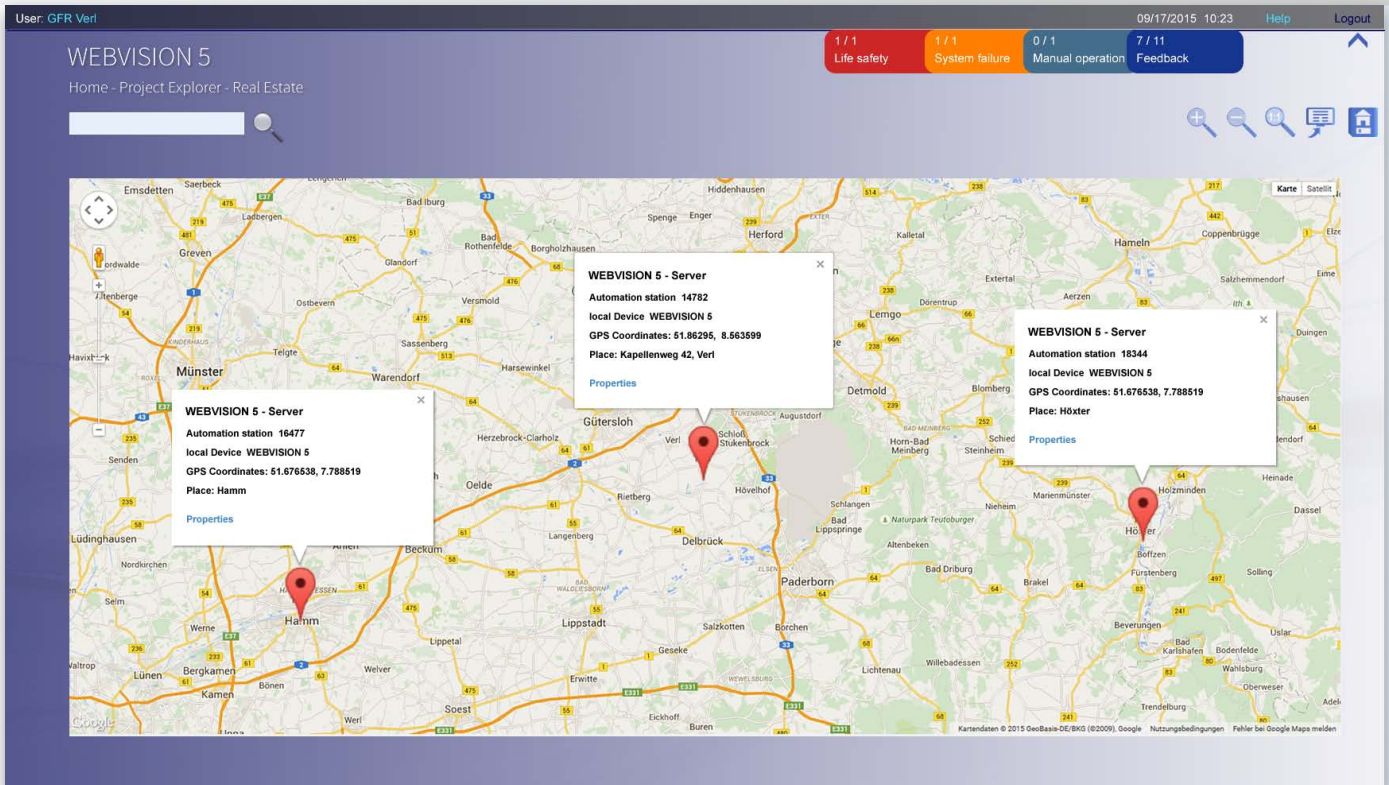
Representing data and consumptions concisely

- Sankey diagrams are essential tools for visualising energy quantity flows, inefficiencies and saving potentials with regard to managing resources.
- Unlike in flow diagrams, the quantities are represented via arrows which are proportionally dimensioned to the quantity.
- If you wish to recognise saving potentials, consumptions have to be visualised comprehensibly. A diagram is ideal for this purpose.



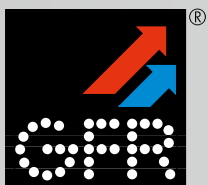
Facility management

Google Maps can be used and customised for visualising locations, objects and sets of controllers.



Simple and clear - Google Maps

- Why should you reinvent the wheel? Google Maps is the familiar interface for representing your distributed facilities.
- All quick information and important messages for the respective object can be obtained within the map where you can jump to the location via a mouse-click.
- Another graphical navigation through the objects and distributed plants is performed in the selected facility.



Applications DASHBOARD



Building and energy data clearly displayed at a glance

Many companies and building operators present their visitors concise energy and building data in their entrance areas. The DASHBOARD displays selected building data clearly and at a glance, independent from the manufacturer of the management and operation controls.

Applications and output media

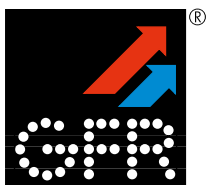
- Large screens in entrance areas or control centres
- Monitoring on mobile devices, tablet computers and smart phones
- Accessory for management and operating units

Added value for the operator

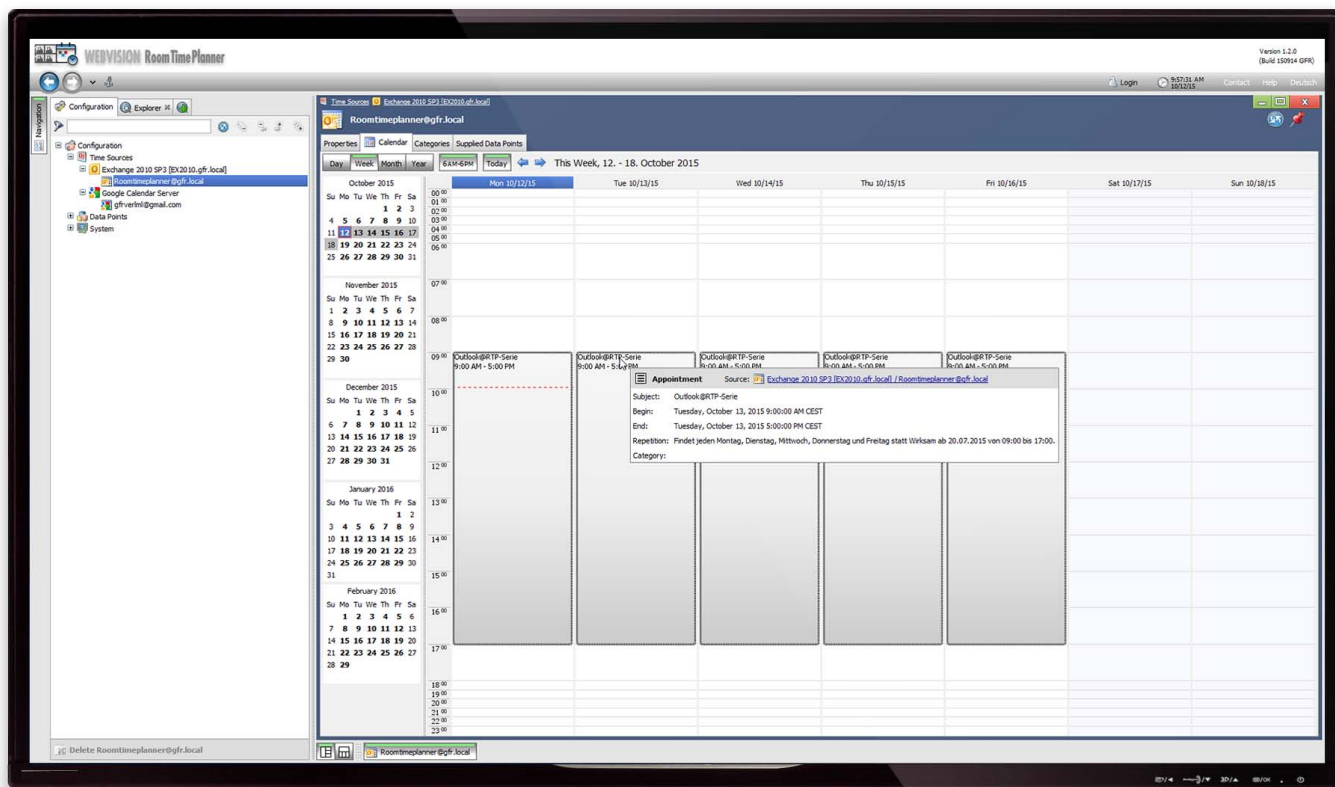
- All data being important for the user are available at a glimpse
- Information is always processed in a way which allows a simple and up-to-date representation

Data sources

- All data derive from csv files which can be generated by all kinds of computer systems (e.g. SAP). Thus, there are manifold possibilities to import data into the DASHBOARD.
- If building and energy data have to be represented, WEBVISION, WEBVISION 5, WEBENCON and the automation system DIGICONTROL provide interfaces for the generation of required data.



Applications RoomTimePlanner



Saving energy by planning room utilisation times and set point values

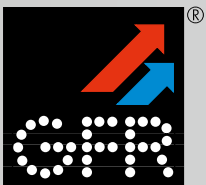
The occupation times of rooms are basically defined once only, exactly when the building or plant are taken into operation, and maintained unchanged ever since. Hence, the operating mode of building automation and heating cannot be adjusted to the actual utilisation of the building. Instead, the room temperature set point values are unnecessarily kept, even in periods of non-use or if there is no utilisation at all.

The solution

RoomTimePlanner provides an interface between different office calendar systems and BACnet-compatible building automation. The times and set point values for room heating are constantly recalculated by the RoomTimePlanner, being based on the actual room occupation in accordance with the entries in the timetables, and then transferred to the building automation system. As a result, energy can be saved and the building can be operated efficiently in every utilisation phase.

Available time management systems:

- Timetable planning software GP Untis/ WebUntis
- Exchange Server (Outlook)
- Google Calendar
- Yahoo Calendar



WEBVISION 5 - System topology

Consistent - comprehensive - complete

WEBVISION 5 offers a wide range of applications and system topologies. The software can be tailored to the individual needs of the customers.

Building management system **WEBVISION 5**

Energy data management system **WEBENCON**

System integration



Management and operator devices

DASHBOARD



Ethernet / BACnet IP



Building automation **DIGICONTROL**

Room automation



Automation system **ems2**

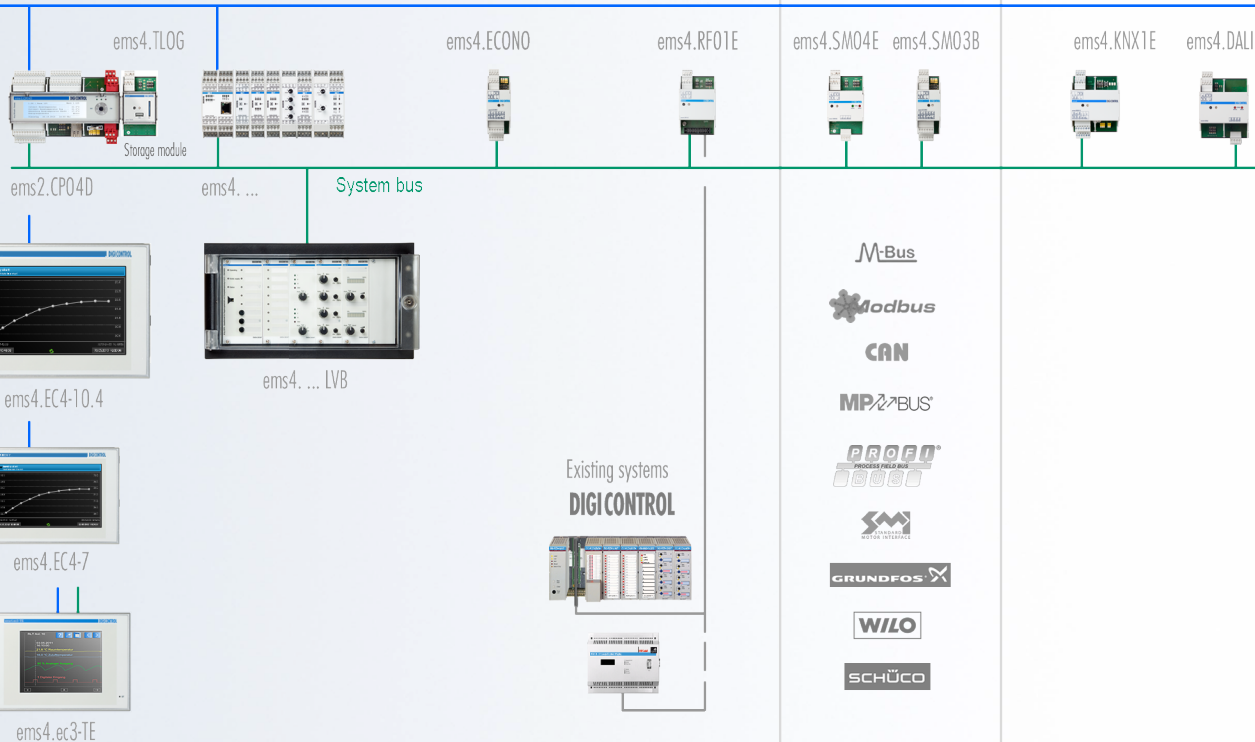
Economizer

Retrofit

Integration



DALI

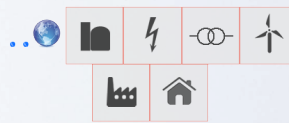


Internet
WLAN

Mobile devices
Webbrowser



Smart Grid Network



SaaS - Remote web clients and server



ROOM4D

Automation system **ems2**



BACnet MS/TP

Multi function modules

Fire damper modules

ems2.CP04D

ems4.KM02E

.ME01E

.DEA11

ems4.EN01B

ems2.R4D1B

Field bus modules



R4D.RC01|02 .RC03|04



FD



R4D. ...



DSL
UMTS
LTE
GPRS
VPN



Integrated web server



WEBVISION 5
iCONTROL
comfort2go

Region Mitte

GFR Verl – Company headquarters

Kapellenweg 42
D-33415 Verl
Tel.: +49 52 46 / 9 62-0
Fax: +49 52 46 / 9 62-199

Subsidiary Hannover

Wiedemannstraße 1
D-31157 Sarstedt
Tel.: +49 50 66 / 997-400
Fax: +49 52 46 / 9 62-199

Office Hannover

Industrieweg 28a
D-30179 Hannover
Tel.: +49 511 / 89 95 97-41
Fax: +49 52 46 / 9 62-199

Region HANSE

Subsidiary Hamburg

Alter Teichweg 37-39
D-22081 Hamburg
Tel.: +49 40 / 27 832-100
Fax: +49 52 46 / 9 62-199

Region SÜD-WEST

Subsidiary Stuttgart

Dormierstraße 4
D-71069 Sindelfingen
Tel.: +49 70 31 / 41 00 93-40
Fax: +49 36 41 / 46 97-13

Region NORD-OST

Subsidiary Berlin

Friedrichshagener Str. 6b
D-12555 Berlin
Tel.: +49 30 / 61 79 588-0
Fax: +49 52 46 / 9 62-199

Region RHEIN-MAIN

Subsidiary Frankfurt

Cutleutstraße 322
D-60327 Frankfurt a.M.
Tel.: +49 69 / 27 13 888-40
Fax: +49 52 46 / 9 62-199

Region MITTEL-DEUTSCHLAND

Subsidiary Jena

Rudolstädter Str. 41
D-07745 Jena
Tel.: +49 36 41 / 46 97-0
Fax: +49 36 41 / 46 97-13

Region RHEIN-NORD

Subsidiary Köln

Olper Straße 113
D-51491 Overath-Steinenbrück
Tel.: +49 22 04 / 9 87 93-0
Fax: +49 52 46 / 9 62-199

Office Dresden

Louis-Braille-Str. 8
D-01099 Dresden
Tel.: +49 351 / 81 08 28-0
Fax: +49 36 41 / 46 97-13

Region RUHR-EMS

Subsidiary Münster

Weberstraße 3
D-48565 Steinfurt
Tel.: +49 25 52 / 63 81 87
Fax: +49 52 46 / 9 62-199

Region BAYERN

Subsidiary München

Adalperstraße 80
D-85737 Ismaning
Tel.: +49 36 41 / 46 97-0
Fax: +49 36 41 / 46 97-13

Office Nordhorn

Kokenmühlenstraße 16
D-48529 Nordhorn
Tel.: +49 59 21 / 788 283-0
Fax: +49 52 46 / 9 62-199

DIGICONTROL Benelux B.V.

Watermanstraat 29a
NL-AJ 7324 Apeldoorn
Tel.: +31 55 36 / 80 53-0
Fax: +31 55 36 / 80 53-1

Subsidiary Czech Republic

Vyskočilova 1326/5
CZ-140 00 Praha 4 - Michle
Tel.: +420 / 236 034 500

GFR Austria

Trappstraße 8
A - 3151 St. Georgen / St. Pölten
Tel.: +43 27 42 / 40 500
Fax: +43 27 42 / 86 260



Presented by:



Ein Unternehmen der WIEDEMANN-Gruppe

DIGICONTROL and DIGI VISION are GFR trademarks for our products and services

