



AIR DUCT THERMOSTAT, IP65

DBTZ

FUNCTION

Temperature monitoring in air or non aggressive gas ducts. Models with setpoint adjustment by knob on or under the cover and range calibration.

APPLICATIONS

Well-suited for general applications in strong polluted domestic and industrial areas.

TYPE	RANGE °C	STAGES	DIFFERENTIAL IN THE STAGE K	DIFFERENTIAL BETW. THE STAGES K	MAX. BULB TEMP. °C	SPRING LENGTH mm
DBTZ-2U	-30...+30	1	1		60	200/Ø21
DBTZ-7	0...+60	1	2...20		75	200/Ø21
DBTZ-7/2	0...+60	2	1	2...5	75	200/Ø21
DBTZ-8	0...+60	1	1		75	200/Ø21
DBTZ-12U	+50...+120	1	ST		140	200/Ø21

Accessory	DBZ-25 - Spiral protection bracket for capillary
------------------	--

Note: the thermostats are supplied with spiral protection bracket model DBZ-25
U models with range under the cover
ST manual maximum reset

TECHNICAL DATA

Sensitive element: liquid-filled coiled copper bulb with 200 mm protection spring and mounting bracket
Contacts: dust-tight microswitches with SPDT contacts (heat/cool)
Switch capacity: 15 (8) A, 24...250 Vac
Differential: see schedule
Working: -35...+65 °C
 10...90% r.h. (without condensing)
Storage: -40...+70 °C
 < 95% r.h.
Housing: Bayblend base, ABS cover
Protection: IP65, class I
Size: 108 x 70 x 72 mm
Weight: 690 g

Note

The range may be calibrated by tuning carefully the hexagon nut under the knob (fig. 1).

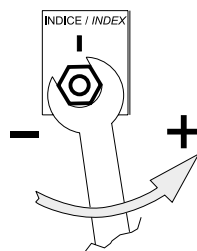
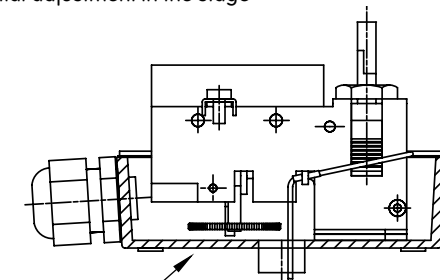


fig. 1

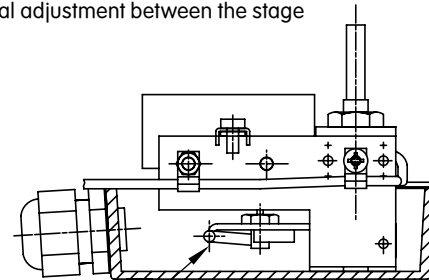
DIFFERENTIAL ADJUSTMENT

Differential adjustment in the stage



regulation from 2...20 K

Differential adjustment between the stage



regulation from 2...5 K

WIRING DIAGRAM

Single-stage models:

Heating

Connect to red and to blue terminal; the contact opens during the temperature rising (fig. 2).

Cooling

Connect to red and to blue terminal; the contact opens during the temperature dropping (fig. 2).

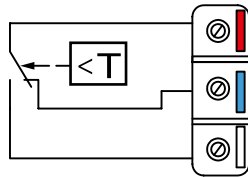
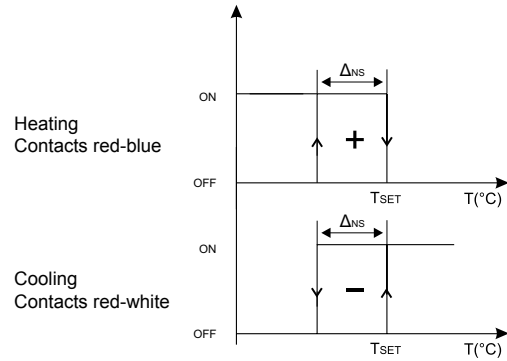


fig. 2

Logic activation single-stage models:



Δ_{NS} : differential in the stage
 T_{SET} : setting setpoint
 ON: closed contact
 OFF: open contact

Two-stage models:

Heating

Connect to red and to blue terminal; the contact opens during the temperature rising (fig. 3), see logic activation.

Cooling

Connect to red and to blue terminal; the contact opens during the temperature dropping (fig. 3), see logic activation.

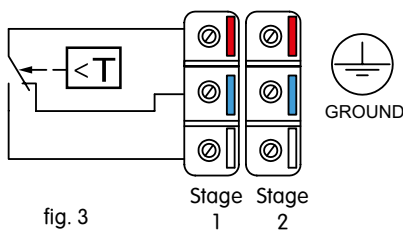
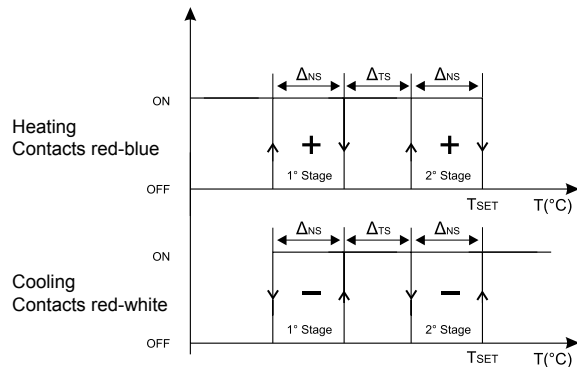


fig. 3

Logic activation two-stage models:



Δ_{NS} : differential in the stage
 Δ_{TS} : differential between the stage
 T_{SET} : setting setpoint
 ON: closed contact
 OFF: open contact

DIMENSIONS (mm)

